



# IT-SIMPLICITY SOLUTIONS BV

---

Advantage of FTTH / FTTX  
dedicated network design  
software based on Autocad.

FTTH / FTTX Project process flow.

Simply Design, Build & Maintain  
FTTH / FTTX networks  
Designs are made in minutes  
Save approx 20% on drop cable  
Save approx 2% on trenching

Real FTTH / FTTX network design & engineering software.  
Faster and more flexible than any GIS.

# IT-SIMPLICITY

FTTH / FTTX software



## CONTENT

- FTTH / FTTX design & engineering software
- 30 years of project experience
- Advantages of Autocad based network design
- FTTH / FTTX OSP network design/engineering process flow
- Software summary

# IT-SIMPLICITY

FTTH / FTTX software



## FTTH / FTTX network design & engineering software solutions

Design    Build    Operate & Maintain

**NetDesign**

FTTH Design



**Design of detailed FTTH-networks**

▶ *AutoCAD® based and creation of all required drawings and network related quantities.*

**NetOptimus**

FTTH Automatic design



**Cost optimized network design**

▶ *Automatic, based on material & installation costs*

**NetProject**

Project Management



**Simplifies complex networks**

▶ *Managing of all labour, quantities & costs. Material management & process control*

**NetID**

Network Registration



**Registration & Documentation**

▶ *Creation of fibre connections / jointing reports. Integrated GIS.*



# IT-SIMPLICITY

FTTH / FTTX software



**30 years of project experience, millions of customer connections!**  
**Dedicated software for FTTH / FTTX OSP networks:**

FTTH / FTTX network design	NetDesign based on Autocad
	Network modelling & high level designs
	Detailed, installer ready & as-built drawings
	NetOptimus
	Automatic cost optimized network design
Project management	NetProject
Registration / Maintenance	NetID
	Fibre schematics, FTU planner
	As-built changes

# IT-SIMPLICITY

FTTH / FTTX software



## Advantages of NetDesign:

Real design software, faster and more flexible than GIS.

NetDesign functions to easily create any FTTX design.

Based on Autocad, the World leader in CAD software.

An experienced CAD designer can start working with NetDesign within minutes.

Autocad is best equipped for:

Usage of our easy customizable: legenda's, symbol libraries, FTTH / FTTX menu's.

The creation of any required drawings for any FTTH / FTTX project like:  
Permits / installation / construction / specials / road-crossing drawings etc. etc.

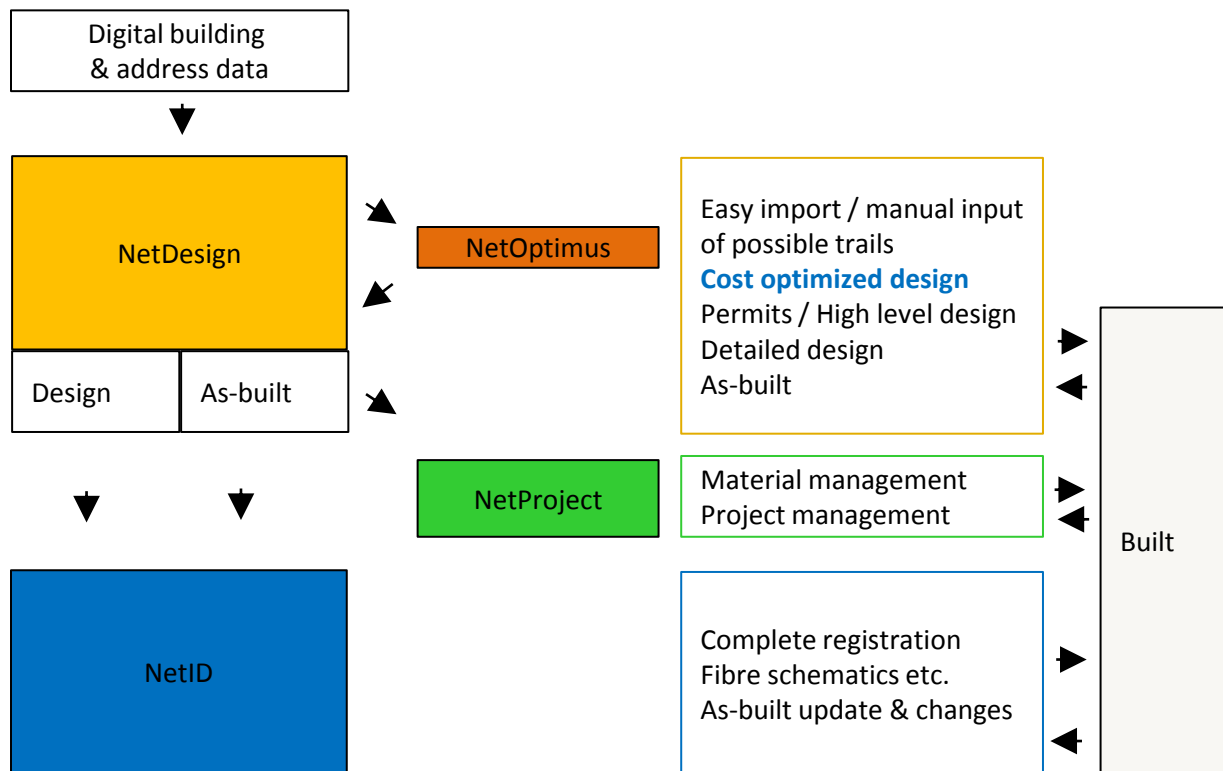
Flexible text and labelling, fully detailed network designs.

# IT-SIMPLICITY

FTTH / FTTX software



## FTTH / FTTX OSP network design / engineering process flow



# IT-SIMPLICITY

FTTH / FTTX software



## FTTH / FTTX OSP network design / engineering process flow

### NetDesign

#### Input preparation

- 01: Import addresses and houses
- 02: Draw mainlines and road-crossings
- 03: Move number to façade of house; create drop lines; create FTU's
- 04: Create line-segments
- 05: Export to NetOptimus

### NetOptimus

#### Automatic cost optimized design

- 06: Import and check input data
- 07: Set cost and design parameters
- 08: Create and show best design
- 09: Export to NetDesign

### NetDesign

#### Detailed Design

- 10: Import NetOptimus cable routes and DP locations
- 11: Create DP's and drop-cable's. Create all labelling per DP.
- 12: Export to NetID

### NetID

#### Fibre schematics

- 13: Import NetDesign data
- 14: Prepare feeders
- 15: Create Fibre-schematics
- 16: Update As-built data from NetDesign



NetDesign

FTTH / FTTX Design

IT-SIMPLICITY

FTTH / FTTX software



(01) Engineer: Import data or manually insert addresses and houses





NetDesign

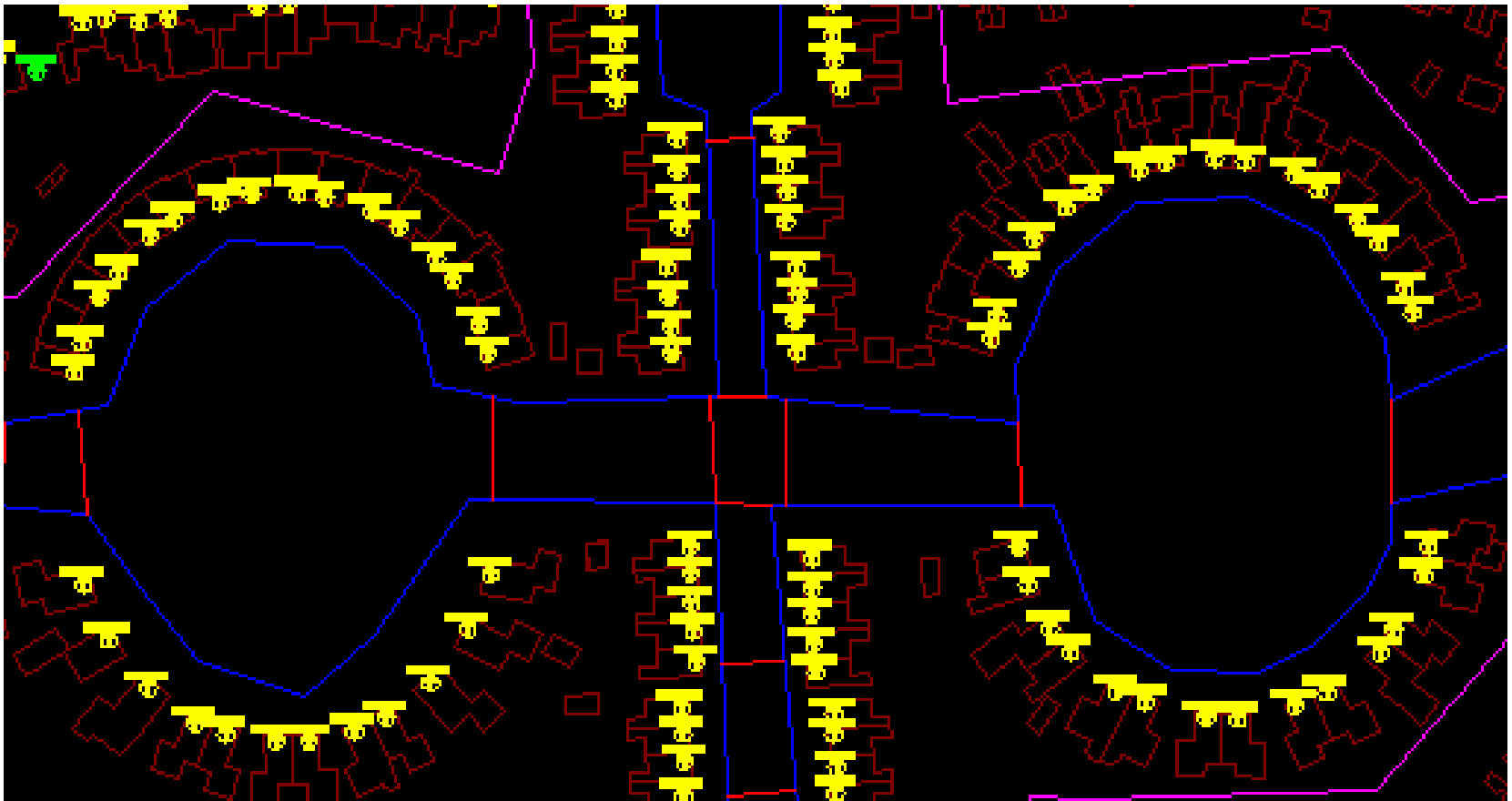
FTTH / FTTX Design

IT-SIMPLICITY

FTTH / FTTX software



(02) Engineer: import data or manually draw mainlines and road-crossings



**NetDesign**

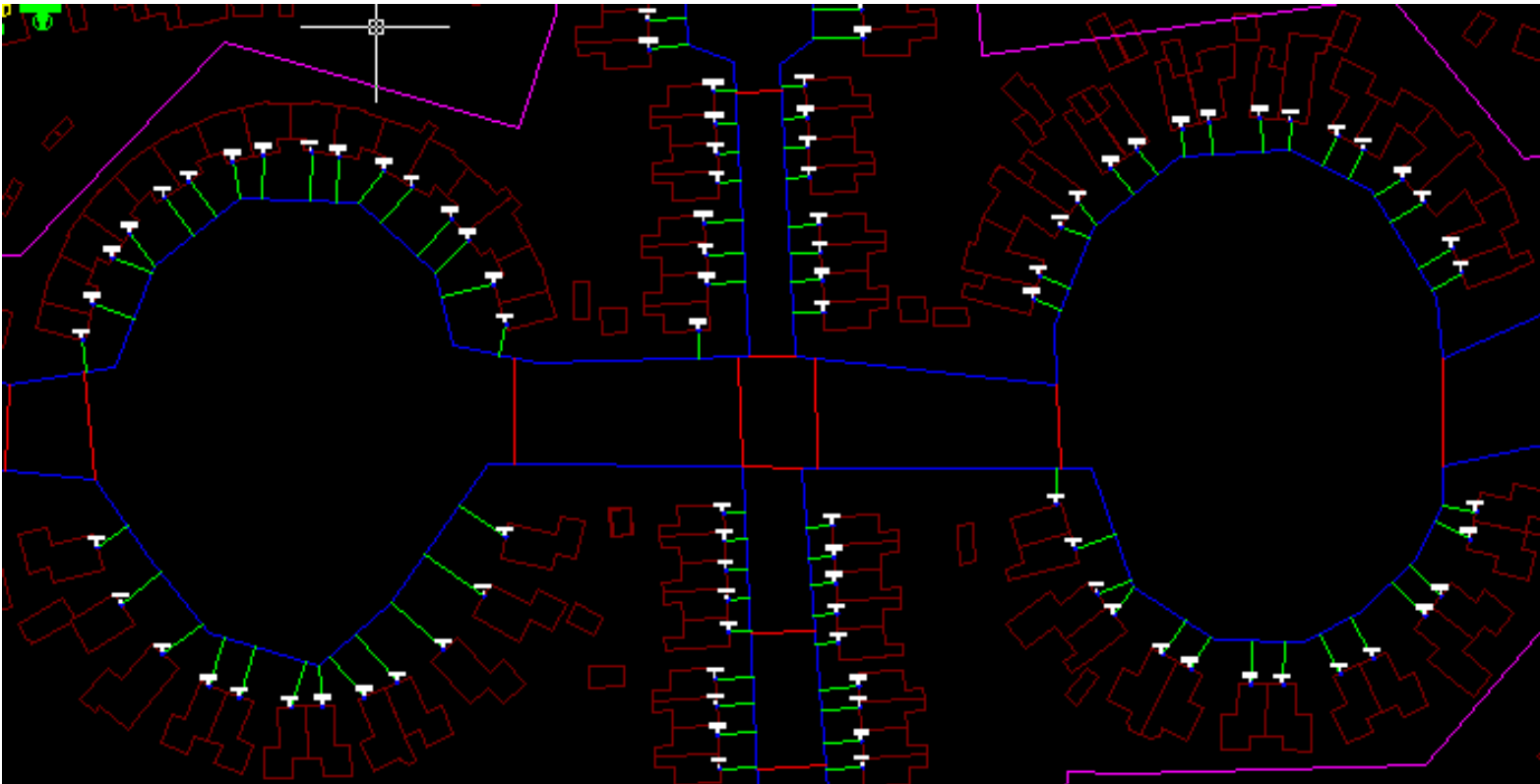
FTTH / FTTX Design

# IT-SIMPLICITY

FTTH / FTTX software



**(03) Automatic: number to façade of house, garden/drop lines, FTU symbols**



**NetDesign**

FTTH / FTTX Design

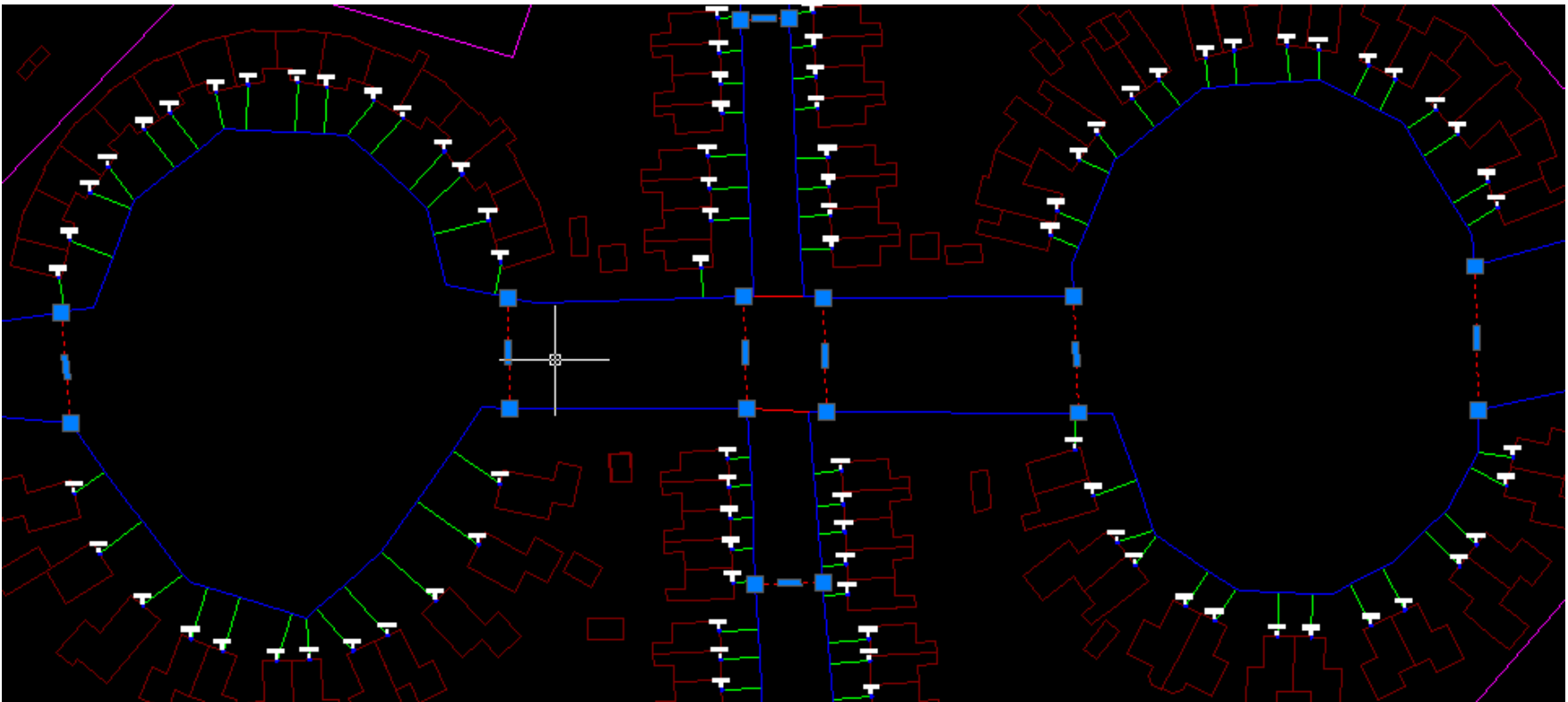
# IT-SIMPLICITY

FTTH / FTTX software



**(04) Automatic: create & correct line-segments**

**(05) Automatic: export drawing to NetOptimus**





# IT-SIMPLICITY

FTTH / FTTX software



## FTTH / FTTX OSP network design / engineering process flow

### NetDesign

#### Input preparation

- 01: Import addresses and houses
- 02: Draw mainlines and road-crossings
- 03: Move number to façade of house; create drop lines; create FTU's
- 04: Create line-segments
- 05: Export to NetOptimus

### NetOptimus

#### Automatic cost optimized design

- 06: Import and check input data
- 07: Set cost and design parameters
- 08: Create and show best design
- 09: Export to NetDesign

### NetDesign

#### Detailed Design

- 10: Import NetOptimus cable routes and DP locations
- 11: Create DP's and drop-cable's. Create all labelling per DP.
- 12: Export to NetID

### NetID

#### Fibre schematics

- 13: Import NetDesign data
- 14: Prepare feeders
- 15: Create Fibre-schematics
- 16: Update As-built data from NetDesign

**NetOptimus**  
Automatic design

# IT-SIMPLICITY

## FTTH / FTTX software



### (06) Automatic: import and check import data

NetOptimus 1.51 R:01 (Project : 12, Level : 1)

File Tools About

Level 1

NetOptimus

Everything is correct!

OK

Basis Costs Advanced MP positions (0)

Max ftu (34) : 44

Multiple points

Calculate factor % (tot. calcs. 15) 5

Max not assigned ftu's 0

MP max (4.95) 0

X : 196176.2305 | Y : 592148.3420 Zoom : 1.1460 Scale : 0.0003032237 FTU's : 218 Object

MP	Ftu's	Total costs	Uid	MP	N.A.	Cable length	Trails length	Existing trails leng	A length	D length	C length	Total costs
<No data to display>												

0

100 %

100 %





# IT-SIMPLICITY

FTTH / FTTX software



## FTTH / FTTX OSP network design / engineering process flow

### NetDesign

#### Input preparation

- 01: Import addresses and houses
- 02: Draw mainlines and road-crossings
- 03: Move number to façade of house; create drop lines; create FTU's
- 04: Create line-segments
- 05: Export to NetOptimus

### NetOptimus

#### Automatic cost optimized design

- 06: Import and check input data
- 07: Set cost and design parameters
- 08: Create and show best design
- 09: Export to NetDesign

### NetDesign

#### Detailed Design

- 10: Import NetOptimus cable routes and DP locations
- 11: Create DP's and drop-cable's. Create all labelling per DP.
- 12: Export to NetID

### NetID

#### Fibre schematics

- 13: Import NetDesign data
- 14: Prepare feeders
- 15: Create Fibre-schematics
- 16: Update As-built data from NetDesign

**NetDesign**

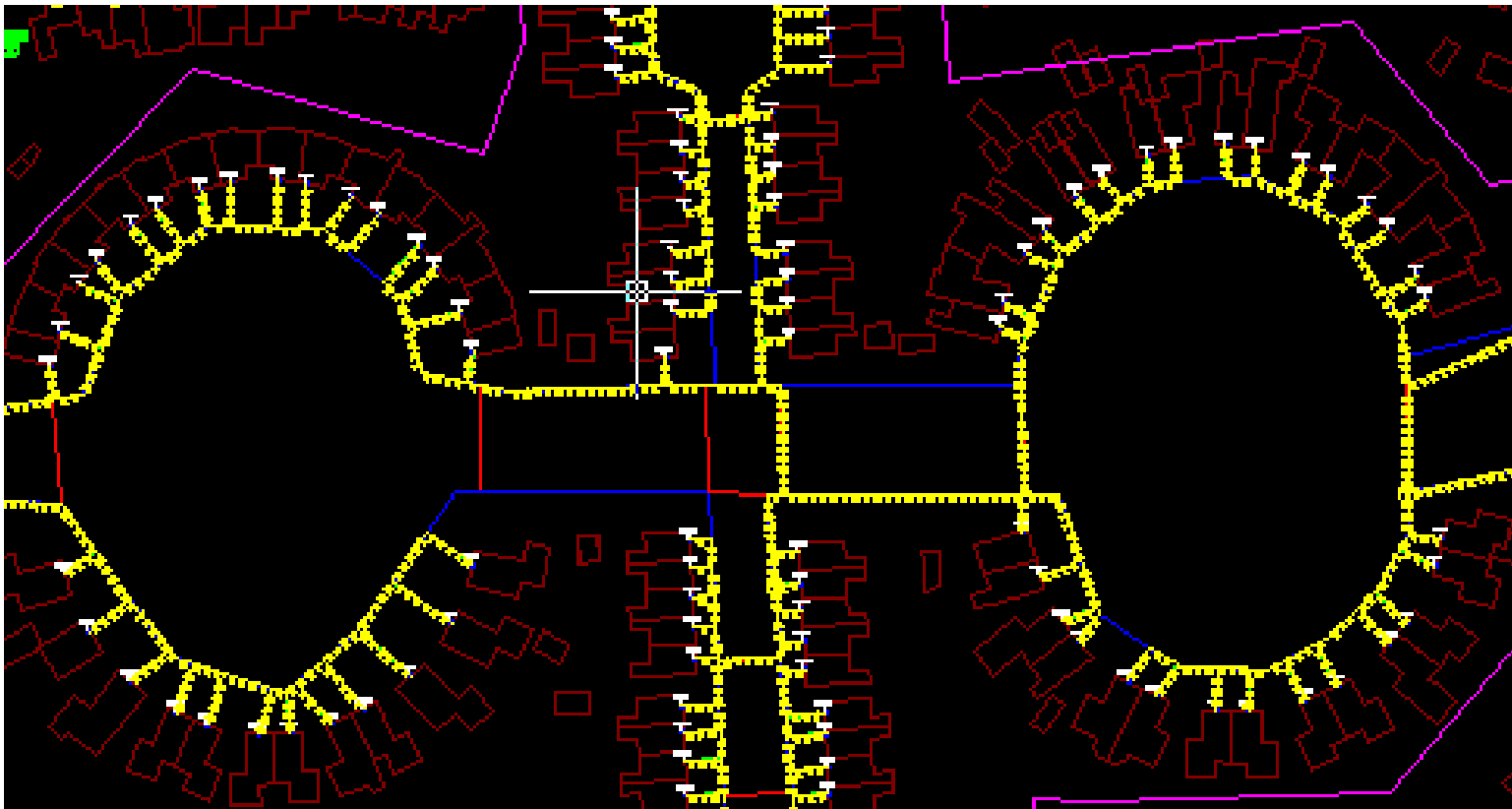
FTTH / FTTX Design

# IT-SIMPLICITY

FTTH / FTTX software



## (10) Automatic: Import NetOptimus cable routes and DP locations



**NetDesign**

FTTH / FTTX Design

# IT-SIMPLICITY

FTTH / FTTX software



- (11) Automatic: Create DP's and drop-cable's. Create all labelling per DP. Based on settings: P2P / GPON, cable types, amount of fibres per FTU etc.
- (12) Automatic: export to NetID





# IT-SIMPLICITY

FTTH / FTTX software



## FTTH / FTTX OSP network design / engineering process flow

### NetDesign

#### Input preparation

- 01: Import addresses and houses
- 02: Draw mainlines and road-crossings
- 03: Move number to façade of house; create drop lines; create FTU's
- 04: Create line-segments
- 05: Export to NetOptimus

### NetOptimus

#### Automatic cost optimized design

- 06: Import and check input data
- 07: Set cost and design parameters
- 08: Create and show best design
- 09: Export to NetDesign

### NetDesign

#### Detailed Design

- 10: Import NetOptimus cable routes and DP locations
- 11: Create DP's and drop-cable's. Create all labelling per DP.
- 12: Export to NetID

### NetID

#### Fibre schematics

- 13: Import NetDesign data
- 14: Prepare feeders
- 15: Create Fibre-schematics
- 16: Update As-built data from NetDesign

NetID

Network registration

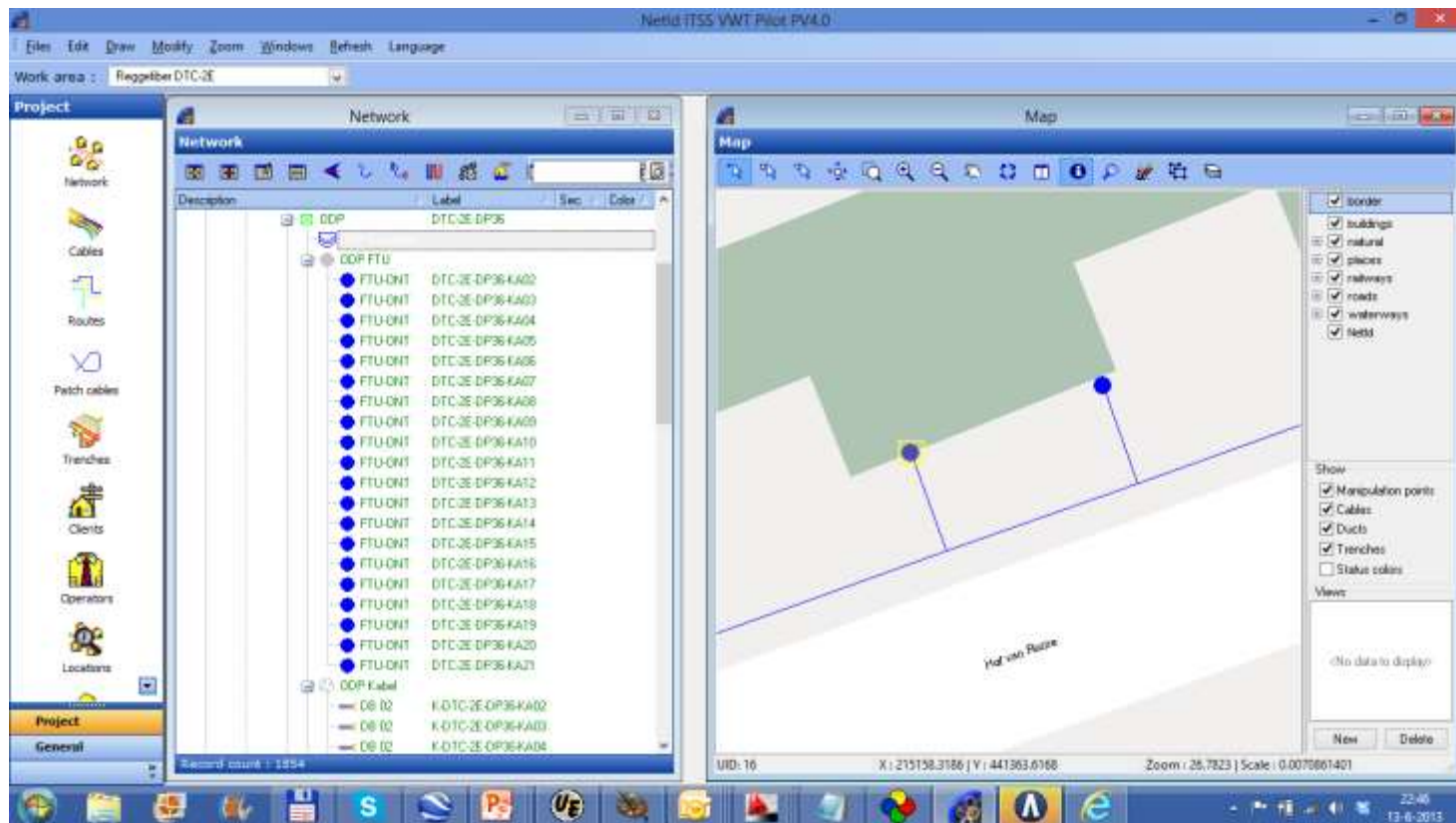
# IT-SIMPLICITY

## FTTH / FTTX software



(13) Automatic: import NetDesign drawing

(14) Engineer: prepare feeders



NetID

Network registration

IT-SIMPLICITY

FTTH / FTTX software



(15) Automatic: create fibre schematics

Any language, any tube & fibre colour schema

(16) Automatic: simple update to As-Built with NetDesign data

The screenshot shows a software window titled 'Connections' with a subtitle 'Connections for item : ODP Cassettes'. The window contains a table with columns for 'Item', 'Sec.', 'No.', 'Color', 'Patch cat', 'Sec.', 'No.', 'Patch cable', 'Color', 'Sec.', 'No.', 'Item', 'Ste', and 'Se'. The table lists 18 rows of fibre connections, each with a unique identifier and color scheme.

Item	Sec.	No.	Color	Patch cat	Sec.	No.	Patch cable	Color	Sec.	No.	Item	Ste	Se
Mini Buis, 1, C:Rood / DK 96 MD, DTC-E2-B12-K02	1	1	Rood/Rood		1	1		Oranje/Blauw	1	1	ODP Kabel / DB 02, K-DTC-E2-DP02-KA01		
Mini Buis, 1, C:Rood / DK 96 MD, DTC-E2-B12-K02	2	2	Rood/Wit		1	2		Oranje/Groen	2	2	ODP Kabel / DB 02, K-DTC-E2-DP02-KA01		
Mini Buis, 1, C:Rood / DK 96 MD, DTC-E2-B12-K02	3	3	Rood/Geel		1	3		Oranje/Blauw	1	1	ODP Kabel / DB 02, K-DTC-E2-DP02-KA02		
Mini Buis, 1, C:Rood / DK 96 MD, DTC-E2-B12-K02	4	4	Rood/Blauw		1	4		Oranje/Groen	2	2	ODP Kabel / DB 02, K-DTC-E2-DP02-KA02		
Mini Buis, 1, C:Rood / DK 96 MD, DTC-E2-B12-K02	5	5	Rood/Groen		1	5		Oranje/Blauw	1	1	ODP Kabel / DB 02, K-DTC-E2-DP02-KA03		
Mini Buis, 1, C:Rood / DK 96 MD, DTC-E2-B12-K02	6	6	Rood/Violet		1	6		Oranje/Groen	2	2	ODP Kabel / DB 02, K-DTC-E2-DP02-KA03		
Mini Buis, 1, C:Rood / DK 96 MD, DTC-E2-B12-K02	7	7	Rood/Bruin		1	7		Oranje/Blauw	1	1	ODP Kabel / DB 02, K-DTC-E2-DP02-KA04		
Mini Buis, 1, C:Rood / DK 96 MD, DTC-E2-B12-K02	8	8	Rood/Zwart		1	8		Oranje/Groen	2	2	ODP Kabel / DB 02, K-DTC-E2-DP02-KA04		
Mini Buis, 1, C:Rood / DK 96 MD, DTC-E2-B12-K02	9	9	Rood/Oranje		1	9		Oranje/Blauw	1	1	ODP Kabel / DB 02, K-DTC-E2-DP02-KA05		
Mini Buis, 1, C:Rood / DK 96 MD, DTC-E2-B12-K02	10	10	Rood/Turquoise		1	10		Oranje/Groen	2	2	ODP Kabel / DB 02, K-DTC-E2-DP02-KA05		
Mini Buis, 1, C:Rood / DK 96 MD, DTC-E2-B12-K02	11	11	Rood/Roze		1	11		Oranje/Blauw	1	1	ODP Kabel / DB 02, K-DTC-E2-DP02-KA06		
Mini Buis, 1, C:Rood / DK 96 MD, DTC-E2-B12-K02	12	12	Rood/Grijs		1	12		Oranje/Groen	2	2	ODP Kabel / DB 02, K-DTC-E2-DP02-KA06		
Mini Buis, 1, C:Rood / DK 96 MD, DTC-E2-B12-K02	13	13	Wit/Rood		2	1		Oranje/Blauw	1	1	ODP Kabel / DB 02, K-DTC-E2-DP02-KA07		
Mini Buis, 1, C:Rood / DK 96 MD, DTC-E2-B12-K02	14	14	Wit/Wit		2	2		Oranje/Groen	2	2	ODP Kabel / DB 02, K-DTC-E2-DP02-KA07		
Mini Buis, 1, C:Rood / DK 96 MD, DTC-E2-B12-K02	15	15	Wit/Geel		2	3		Oranje/Blauw	1	1	ODP Kabel / DB 02, K-DTC-E2-DP02-KA08		
Mini Buis, 1, C:Rood / DK 96 MD, DTC-E2-B12-K02	16	16	Wit/Blauw		2	4		Oranje/Groen	2	2	ODP Kabel / DB 02, K-DTC-E2-DP02-KA08		
Mini Buis, 1, C:Rood / DK 96 MD, DTC-E2-B12-K02	17	17	Wit/Groen		2	5		Oranje/Blauw	1	1	ODP Kabel / DB 02, K-DTC-E2-DP02-KA09		
Mini Buis, 1, C:Rood / DK 96 MD, DTC-E2-B12-K02	18	18	Wit/Violet		2	6		Oranje/Groen	2	2	ODP Kabel / DB 02, K-DTC-E2-DP02-KA09		





# IT-SIMPLICITY

FTTX Software & Services



## SOFTWARE

FTTH / FTTX ITS-Software Suite™

FTTH / FTTX ITS-Software Suite™

Is a proven software solution to Design, Build & Maintain FTTX networks.

The ITS-Software Suite™ has designed, registered and installed several millions of connections.

The ITS-Software Suite™ :

- Cost optimized automatic CAD design
- Dedicated software for FTTH / FTTX Project-Management
- Simple conversion from pre-registration to As-built network registration
- Offers full control over your projects



# IT-SIMPLICITY

FTTX Software & Services



## SOFTWARE

FTTH / FTTX ITS-Software Suite™: network design

NetDesign™

Flexible solution for FTTH / FTTX **design**, based on Autocad.

Automatic: costing, cabling, labelling, easy switch from P2P to GPON.

Fast output as: schematics, installer ready & as-built designs. Easy to learn.



# IT-SIMPLICITY

FTTX Software & Services



## SOFTWARE

FTTX ITS-Software Suite™: project management

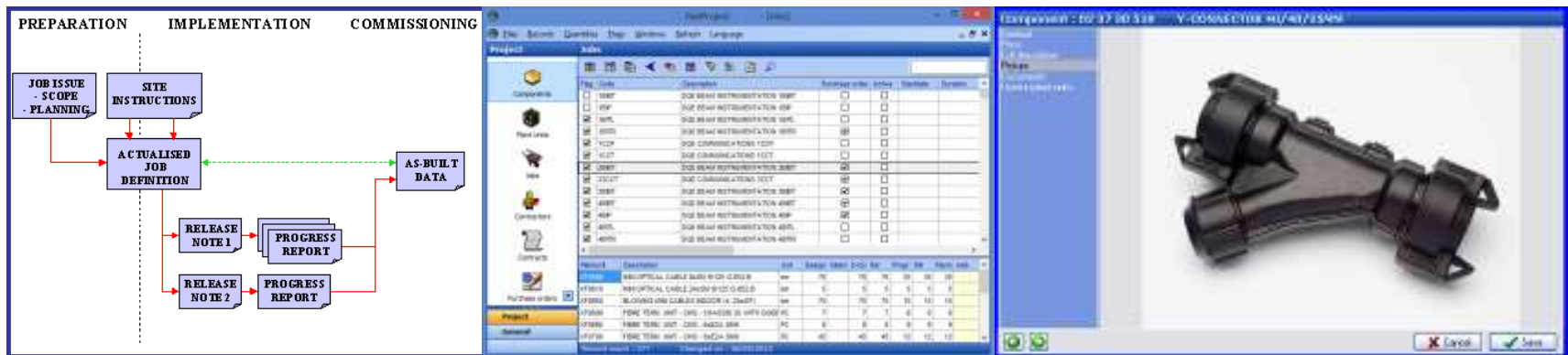
NetProject™

Extensive system for: Material, Contract and **Project management.**

Lego-like structure: three project levels with 'building blocks'.

Total process control, including: purchasing, contractors, progress reports.

Completely customizable and simple to operate.



# IT-SIMPLICITY

FTTX Software & Services



# SOFTWARE

FTTX ITS-Software Suite™: network registration

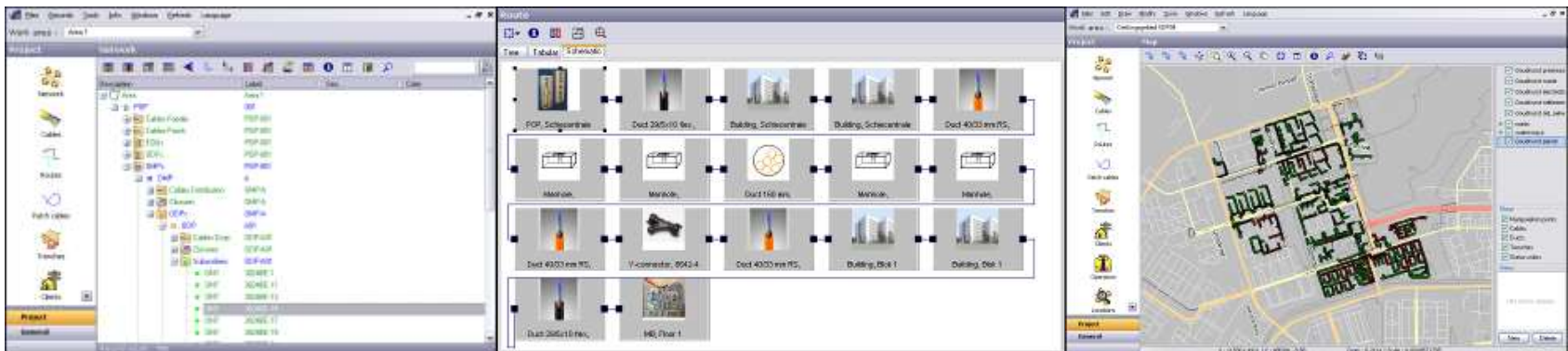
NetID™

Network **registration** with easy tree structure en integrated GIS.

All information directly available for multiple users.

All network details are direct available in multiple views and GIS.

Lego-like customizable building blocks. Easy to operate.







# IT-SIMPLICITY

---

FTTX Software & Services



## SOFTWARE NetOptimus™

NetOptimus™

Our automatic network design solution.

Creates the highest quality FTTH / FTTX network–designs by using complex optimization algorithms within a user friendly graphical interface.

Cost optimized network designs are made in minutes instead of days.

Optimization parameters:

- Civil costs
- Material costs
- Installation costs



# IT-SIMPLICITY

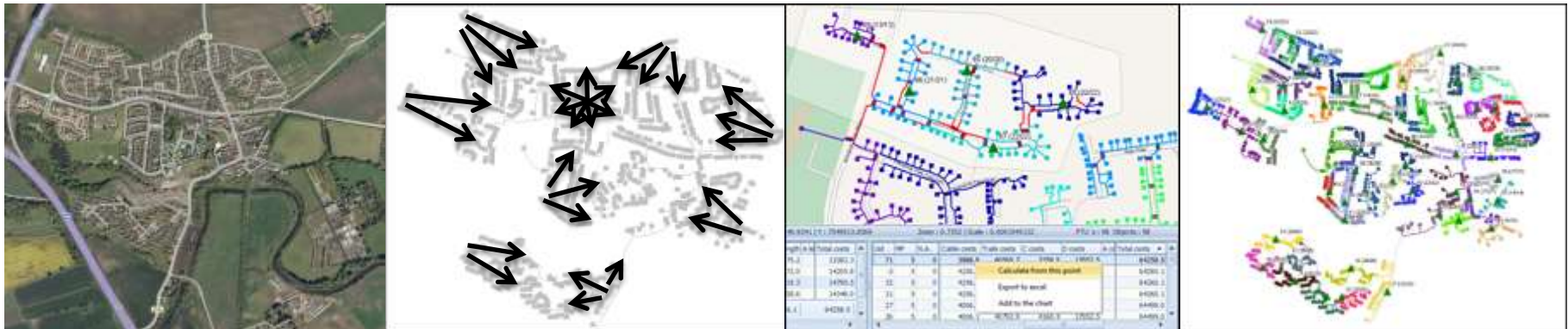
FTTX Software & Services



## SOFTWARE NetOptimus™

NetOptimus™ offers substantial benefits in terms of reducing the engineering time and network building costs.

The best network designs are listed and made visible within minutes





# IT-SIMPLICITY

---

FTTX Software & Services



## SOFTWARE NetOptimus™

Network designs and costs are directly available per area.

Multiple levels and network concepts.

Savings (approx):

20 % less drop cable by improved grouping homes

2 % less distribution cable by best DP positioning

2% less trenching costs by improved routing

100 times faster than manual / alternative engineering





# IT-SIMPLICITY

---

ITSimplicity Solutions BV  
info@itsimplicity.nl  
M +31-646430926  
T +31-348552981  
Skype: itsimplicity  
www.itsimplicity.nl