



# IT-SIMPLICITY SOLUTIONS BV

---

ITS-NetProject™

Our FTTH / FTTX network planning & project management software is an important member of our suite of FTTH solutions & planning tools.

Project phases:  
Preparation/Planning  
Implementation/Execution  
Commissioning/Maintenance  
With:  
Material management  
Contract management  
Project management

FTTH / FTTX turn-key project planning & management

# IT-SIMPLICITY

## FTTH / FTTX planning



## CONTENT

- Introduction FTTH / FTTX network planning
- General information
- Project orientation
- Job orientation
- Material management
- Project management
- Reporting
- The FTTH Software Suite

# IT-SIMPLICITY

## Introduction, summary



### ITS-NetProject

Extensive system for: **Material, Contract and Project management.**

Lego-like structure: three project levels with 'building blocks'.

Total process control, including: purchasing, contractors, progress reports.

Completely customizable and simple to operate.

Picture: FTTH project preparation, implementation and commissioning, project info, supplier info, datasheets

The composite image illustrates the ITS-NetProject system's application in FTTH project management. It is divided into three main sections:

- Workflow Diagram:** A process flow chart divided into three stages: PREPARATION, IMPLEMENTATION, and COMMISSIONING. In the PREPARATION stage, 'JOB ISSUE SCOPE - PLANNING' leads to 'ACTUALISED JOB DEFINITION'. In the IMPLEMENTATION stage, 'SITE INSTRUCTIONS' also leads to 'ACTUALISED JOB DEFINITION'. From 'ACTUALISED JOB DEFINITION', the process moves to 'RELEASE NOTE 1' and 'RELEASE NOTE 2', which both lead to 'PROGRESS REPORT'. In the COMMISSIONING stage, 'AS-BUILT DATA' is generated, which feeds back into 'ACTUALISED JOB DEFINITION' (indicated by a green dashed arrow) and also receives input from the 'PROGRESS REPORT'.
- Software Interface:** A screenshot of the ITS-NetProject software showing a 'Project' window with a table of components. The table lists various optical cables and connectors with columns for 'Part No.', 'Description', 'Qty', 'Unit', 'Status', and 'Action'. Below the table, there are sections for 'Project' and 'Material'.
- 3D Model:** A 3D CAD model of a black optical connector or coupler, shown from a perspective view. The model is displayed in a window titled 'Component: for 17 30 536 - V-CONECT108 4U/41/2504'.

# IT-SIMPLICITY

## Introduction



ITS-NetProject is made for the complete project- and material management of turn-key telecommunication FTTX / FTTH projects.

It is also used to get a quick estimate of cost and sales prices, material and labour quantities for concepts/drafts and detailed network designs.

ITS-NetProject is the proven product of 30 years of experience in designing, engineering, installing, commissioning and maintaining communication networks.

The software can have added value for anybody who has to deal with network engineering & planning, business case calculations and turn-key projects, large and small, urban and rural, business areas, FTTX networks and massive FTTH projects.

# IT-SIMPLICITY

## Introduction



**ITS-NetProject: our software for FTTH / FTTX project planning & management.**

### **Turn-key projects.**

The FTTH / FTTX network planning software was originally made by and used internally by: NKF (Nokia / Philips) / Draka (Prysmian Group) and their project offices with local staff for the planning & building of turn-key OSP Telecom projects.

Demands: simplified project structure, detailed reporting, clear project management.

### **History.**

Since 1983 NKF has been developing pc software for project management. In 1985 NKF started the creation of Toppics, a successful project management software, created specially for very large Out Side Plant turn-key projects. The development of NetProject started in 1995 as a replacement for Toppics. Since then the software has been renewed every year and has been used intensively in several countries in: Africa, Asia, Europe, The Middle-East & The Caribbean for Copper & Optical fibre networks. Since 2012 the software is commercially made available by ITS.

# IT-SIMPLICITY

## General information



ITS-NetProject is developed as a multi-user system with a central MySQL database. This project planning software offers, per project:

### **Material management**

- Product management (Component & Supplier management)
- Purchasing
- Store management (store content, incoming and outgoing materials, etc.)

### **Contract management**

- Contractor definition
- Contract definition (scope, labour components, prices, etc.)

### **Project management**

- Job / work-order definitions
- Implementation scheduling with Job release & material issue notes
- Progress & as-built reporting, billing & payments

# IT-SIMPLICITY

## Project orientation



ITS-NetProject is both project- and job (work-order) oriented. Each project is build up in its own project-file, separate from the other projects.

There is **one MASTER project** which is accessible for modification by authorized personnel only. In the MASTER project all relevant data (for instance price-information) is centrally controlled and kept up-to-date.

From within each individual project, information can be copied or updated from this MASTER project and any other project.

**Creating a new project** can be done in several ways:

- Start a new empty project
- Start a new project with all definitions from another project

Within a project you can:

- Define & modify materials & installation units manually
- Copy certain (or all) materials & installation units definitions from other projects
- Update material & installation unit definitions with relevant data & prices

# IT-SIMPLICITY

## Job orientation



**ITS-NetProject uses only three ABC levels to define a project:**

1. **A**rea-activity Job level
2. **B**uilding-block Plant-unit level
3. **C**omponent Component level

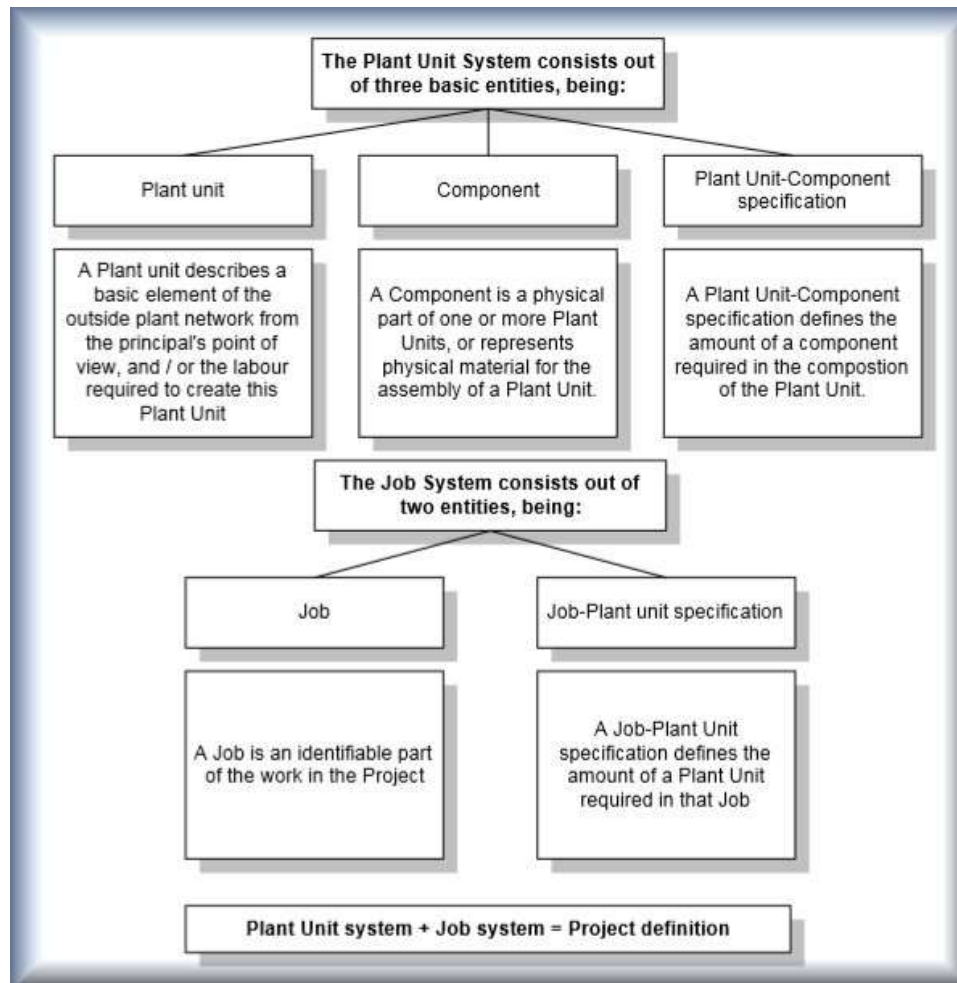


1. Job level (work-order / activity): plant-unit codes with job-specific quantities
2. Plant-unit level (installation unit): material and/or labour, combination of components
3. Component level: a material or labour element



# IT-SIMPLICITY

## Job orientation, definitions



# IT-SIMPLICITY

---

## Job orientation, design link



This system is successfully implemented in numerous projects. Plant-units may be regarded as multiple component units, whether they are material components, labour components or a combination of both. The plant-units were introduced to simplify design, project management, purchasing and invoicing procedures.

ITS-NetProject is typically used in combination with our network design tool ITS-NetDesign. With ITS-NetDesign jobs are created automatically, simply by making designs with our drawing FTTH / FTTX objects. To these drawing objects, plant-units and quantities are attached automatically. This drawing information can easily be imported / updated by ITS-NetProject, within seconds all network designs details, quantities and costs can be shown with a variety of standard reports.

# IT-SIMPLICITY

## Job orientation, design link



The direct link between our network design & project management software

### ITS-NetDesign

FTTH / FTTX network design



### Design of detailed FTTH-networks

- ▶ *AutoCAD® based creation of all required drawings and network related quantities.*
- Unlimited project / network size*
- Totally customizable*
- Produces installer-ready designs*
- Automatic labelling*
- Automatic job creation*



### ITS-NetProject

FTTH / FTTX Project Management



### Reporting

- ▶ *Detailed installation and material quantities and costs per job/activity/area/project.*

# IT-SIMPLICITY

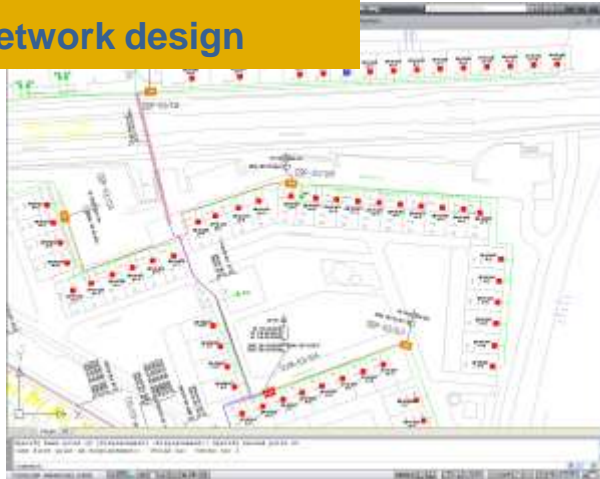
Job orientation, design link



The direct link between our network design & project management software

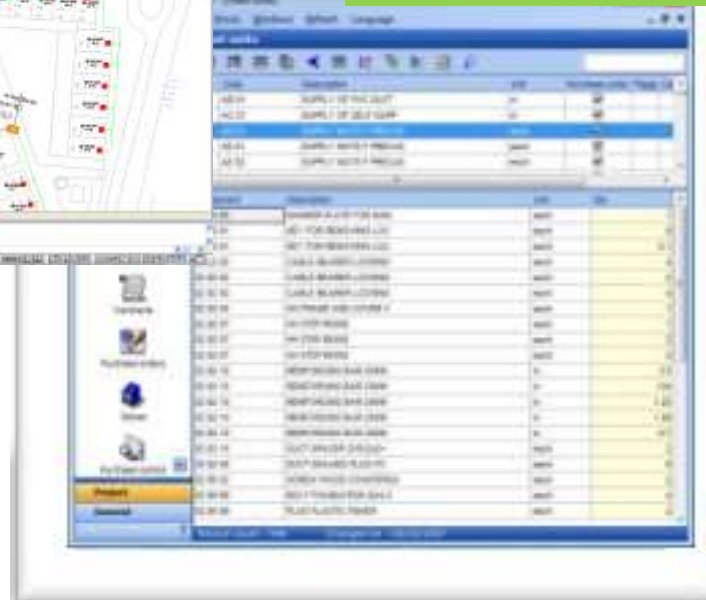
**ITS-NetDesign**

FTTH / FTTX network design



**ITS-NetProject**

FTTH / FTTX Project Management



# IT-SIMPLICITY

## Job orientation, design link



Example:

When drawing in Autocad with the ITS-NetDesign toolbar:

- Click in the FTTH / FTTX toolbar “Tubecable 40/10x7 in trench”
- Draw a simple line with a length of 1 meter

In ITS-NetProject the following Bill of Quantities will be produced automatically:

DRAWING-OBJECT:		
	Tubecable 40/10x7 in trench	1m
1	HDPE-duct 40mm	1m
2	Guidetube 7/5.5mm	10m
3	Prefabrication guidetubes in HDPE-duct	1m
4	Duct identificationmarker	0.5pce
5	Trenching	1m
6	Laying tubecable 40mm/10x7mm	1m

# IT-SIMPLICITY

## Material management



In a project-environment, the material management is of the utmost importance. The control over the material locations and material flows has a very high organizational and financial impact on the project.

In ITS-NetProject, therefore the following material management tools are available:

- Product management
- Purchasing
- Store management

# IT-SIMPLICITY

## Material management



### Product management

ITS-NetProject: all material and labour components to be implemented in a project can be uniquely defined with article codes, units, supplier information, price information. Quality control documents can be attached per component.

Example:

In the main component screen an overview is given of the 89 component definitions in this project X.

A larger FTTH / FTTX project can have 200 – 300 component definitions. (Copper > 900 definitions)

NetProject - [Components]

Files Records Prices Flags Windows Refresh Language

Project	Components																																																																											
Components	<table border="1"><thead><tr><th>Flag</th><th>Code</th><th>Description</th><th>Unit</th><th>Type</th></tr></thead><tbody><tr><td><input type="checkbox"/></td><td>P037304980</td><td>PLUG TYPE 13: SEALING DUCT 40MM TO 5X10MM OUTSIDE</td><td>pce</td><td>L. mater</td></tr><tr><td><input type="checkbox"/></td><td>02 37 30 450</td><td>CONNECTOR GUIDETUBE STRAIGHT 7-7MM</td><td>each</td><td>F. mater</td></tr><tr><td><input type="checkbox"/></td><td>02 37 30 460</td><td>CONNECTOR GUIDETUBE END-STOP 7/0MM</td><td>each</td><td>F. mater</td></tr><tr><td><input type="checkbox"/></td><td>02 37 30 461</td><td>CONNECTOR GUIDETUBE END-CABLE 7/4MM</td><td>each</td><td>F. mater</td></tr><tr><td><input type="checkbox"/></td><td>02 37 30 465</td><td>CONNECTOR GUIDETUBE END-STOP 10/0MM</td><td>each</td><td>F. mater</td></tr><tr><td><input type="checkbox"/></td><td>02 37 30 466</td><td>CONNECTOR GUIDETUBE END-CABLE 10/5MM</td><td>each</td><td>F. mater</td></tr><tr><td><input type="checkbox"/></td><td>02 37 30 154</td><td>DUCTCOUPLING 25-25 MM</td><td>each</td><td>F. mater</td></tr><tr><td><input type="checkbox"/></td><td>02 37 30 160</td><td>DUCTCOUPLING 50-50 MM</td><td>each</td><td>F. mater</td></tr><tr><td><input type="checkbox"/></td><td>18002037</td><td>OPTICAL FIBRE CABLE 12xSM+12xMM (SM-LRG)</td><td>m</td><td>F. mater</td></tr><tr><td><input type="checkbox"/></td><td>18002584</td><td>OPTICAL FIBRE CABLE 4xSM 9/125 G.652.B</td><td>m</td><td>L. mater</td></tr><tr><td><input type="checkbox"/></td><td>18002585</td><td>OPTICAL FIBRE CABLE 12xSM 9/125 G.652.B</td><td>m</td><td>L. mater</td></tr><tr><td><input type="checkbox"/></td><td>18002587</td><td>OPTICAL FIBRE CABLE 48xSM 9/125 G.652.B</td><td>m</td><td>F. mater</td></tr><tr><td><input type="checkbox"/></td><td>18002644</td><td>OPTICAL FIBRE CABLE 60xSM 9/125 G.652.B</td><td>m</td><td>F. mater</td></tr><tr><td><input type="checkbox"/></td><td>18002679</td><td>OPTICAL FIBRE CABLE 2xSM 9/125 G.652.B</td><td>m</td><td>L. mater</td></tr></tbody></table>	Flag	Code	Description	Unit	Type	<input type="checkbox"/>	P037304980	PLUG TYPE 13: SEALING DUCT 40MM TO 5X10MM OUTSIDE	pce	L. mater	<input type="checkbox"/>	02 37 30 450	CONNECTOR GUIDETUBE STRAIGHT 7-7MM	each	F. mater	<input type="checkbox"/>	02 37 30 460	CONNECTOR GUIDETUBE END-STOP 7/0MM	each	F. mater	<input type="checkbox"/>	02 37 30 461	CONNECTOR GUIDETUBE END-CABLE 7/4MM	each	F. mater	<input type="checkbox"/>	02 37 30 465	CONNECTOR GUIDETUBE END-STOP 10/0MM	each	F. mater	<input type="checkbox"/>	02 37 30 466	CONNECTOR GUIDETUBE END-CABLE 10/5MM	each	F. mater	<input type="checkbox"/>	02 37 30 154	DUCTCOUPLING 25-25 MM	each	F. mater	<input type="checkbox"/>	02 37 30 160	DUCTCOUPLING 50-50 MM	each	F. mater	<input type="checkbox"/>	18002037	OPTICAL FIBRE CABLE 12xSM+12xMM (SM-LRG)	m	F. mater	<input type="checkbox"/>	18002584	OPTICAL FIBRE CABLE 4xSM 9/125 G.652.B	m	L. mater	<input type="checkbox"/>	18002585	OPTICAL FIBRE CABLE 12xSM 9/125 G.652.B	m	L. mater	<input type="checkbox"/>	18002587	OPTICAL FIBRE CABLE 48xSM 9/125 G.652.B	m	F. mater	<input type="checkbox"/>	18002644	OPTICAL FIBRE CABLE 60xSM 9/125 G.652.B	m	F. mater	<input type="checkbox"/>	18002679	OPTICAL FIBRE CABLE 2xSM 9/125 G.652.B	m	L. mater
Flag	Code	Description	Unit	Type																																																																								
<input type="checkbox"/>	P037304980	PLUG TYPE 13: SEALING DUCT 40MM TO 5X10MM OUTSIDE	pce	L. mater																																																																								
<input type="checkbox"/>	02 37 30 450	CONNECTOR GUIDETUBE STRAIGHT 7-7MM	each	F. mater																																																																								
<input type="checkbox"/>	02 37 30 460	CONNECTOR GUIDETUBE END-STOP 7/0MM	each	F. mater																																																																								
<input type="checkbox"/>	02 37 30 461	CONNECTOR GUIDETUBE END-CABLE 7/4MM	each	F. mater																																																																								
<input type="checkbox"/>	02 37 30 465	CONNECTOR GUIDETUBE END-STOP 10/0MM	each	F. mater																																																																								
<input type="checkbox"/>	02 37 30 466	CONNECTOR GUIDETUBE END-CABLE 10/5MM	each	F. mater																																																																								
<input type="checkbox"/>	02 37 30 154	DUCTCOUPLING 25-25 MM	each	F. mater																																																																								
<input type="checkbox"/>	02 37 30 160	DUCTCOUPLING 50-50 MM	each	F. mater																																																																								
<input type="checkbox"/>	18002037	OPTICAL FIBRE CABLE 12xSM+12xMM (SM-LRG)	m	F. mater																																																																								
<input type="checkbox"/>	18002584	OPTICAL FIBRE CABLE 4xSM 9/125 G.652.B	m	L. mater																																																																								
<input type="checkbox"/>	18002585	OPTICAL FIBRE CABLE 12xSM 9/125 G.652.B	m	L. mater																																																																								
<input type="checkbox"/>	18002587	OPTICAL FIBRE CABLE 48xSM 9/125 G.652.B	m	F. mater																																																																								
<input type="checkbox"/>	18002644	OPTICAL FIBRE CABLE 60xSM 9/125 G.652.B	m	F. mater																																																																								
<input type="checkbox"/>	18002679	OPTICAL FIBRE CABLE 2xSM 9/125 G.652.B	m	L. mater																																																																								
Plant Units																																																																												
Jobs																																																																												
Contractors																																																																												
Project																																																																												
General																																																																												

Record count : 89

# IT-SIMPLICITY

## Project management



### **Project management**

ITS-NetProject is organized in such a way that it can directly be used for project management purposes.

In ITS-NetProject jobs, defined by a scope and a planning, are issued to the contractor for implementation.

During the preparation phase the contractor checks the received job on completeness, amounts, etc. and reports deviations to the customer.

Any necessary modification to the original job description is done by site instructions.

The sum of the job issue-notes and the site-instructions states the actualized job definition: this is the up-to-date version of what the contractor has to do. In this way the implementation process can flexibly be adapted to the circumstances while keeping completely in control.



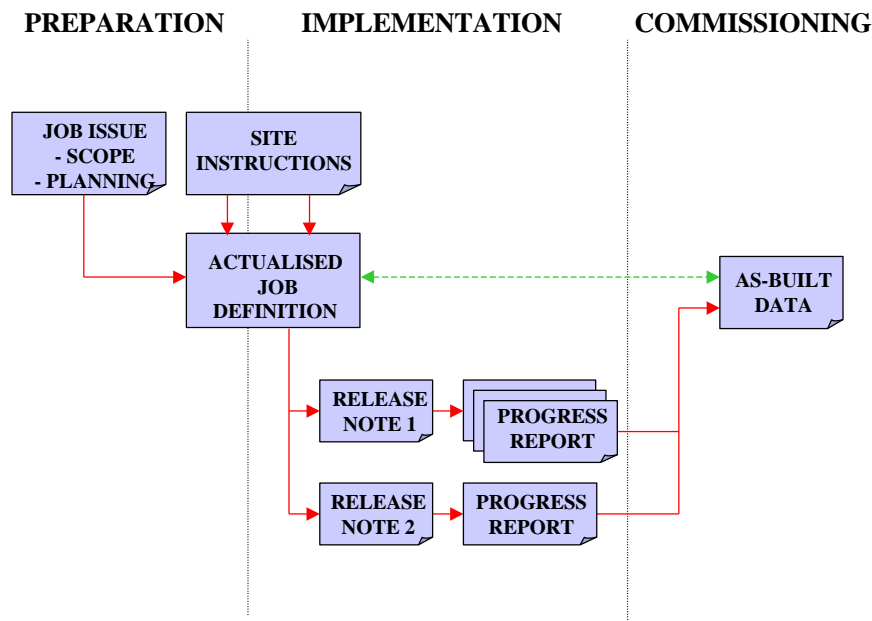
# IT-SIMPLICITY

## Project management



### Project management

A job can be so large or complex that it has to be implemented in parts or sections. For this purpose release notes are issued to inform the contractor when he is allowed to do a certain portion of the job / work. On these release notes the progress is reported, as well as the as-built data.



# IT-SIMPLICITY

## Project management



### Project management

The following picture displays the main job menu screen. The upper part of the menu displays the different jobs which are to be implemented in this project. In the lower part of the menu the contents and details of the job selected and highlighted in the upper part are displayed.

The screenshot shows the NetProject software interface. The top window title is 'NetProject X ([jobs]'. The menu bar includes 'Files', 'Records', 'Quantities', 'Flags', 'Windows', 'Refresh', and 'Language'. The main area is divided into two sections: 'Jobs' and a detailed view of a selected job.

**Jobs Table:**

Flag	Code	Description	Startdate	Active	Duration
<input type="checkbox"/>	hanoi-basemap			<input type="checkbox"/>	
<input checked="" type="checkbox"/>	hanoi-proj2-40-tubes			<input type="checkbox"/>	
<input checked="" type="checkbox"/>	hanoi-proj2-FEEDER			<input type="checkbox"/>	
<input checked="" type="checkbox"/>	hanoi-proj2-GEUL			<input type="checkbox"/>	
<input checked="" type="checkbox"/>	hanoi-proj2-hh			<input type="checkbox"/>	
<input checked="" type="checkbox"/>	hanoi-proj2-pop			<input type="checkbox"/>	
<input type="checkbox"/>	saigon-basemap			<input type="checkbox"/>	
<input type="checkbox"/>	saigon-basemap-40-tube			<input type="checkbox"/>	

**Job Details Table (Selected Job: A-DUCT<math>\leq 40</math>):**

Plantunit	Description	Unit	Design	Sitein	D=SI	Rel	Progr	Bill	Payn	Asb
A-DUCT<math>\leq 40</math>	Labour for duct <math>\leq 40</math>mm	m	226200		226200					
DUCT 40-PLUG	Plug for 40mm duct	each	24		24					
DUCT 40MM	Duct 40mm	m	226200		226200					
HH-1	Handhole rectangular	each	26		26					
HH-1-L	Labour Handhole rectangular	each	26		26					
PLUG 07MMX10	Plug 7mm x 10	each	23		23					
PLUG 10MMX05	Plug 10mm x 5	each	24		24					
POP	POP	each	3		3					

Record count : 12

# IT-SIMPLICITY

## Project management



### **Project management**

By selecting / double clicking a job all detailed information is shown:

- Contract (contractor+prices) selection
- Design status & Logistical status
- Quantity details for designed, extra work & as-built
- Attached documents
- Release notes
- Progress reports & Billing & Payments
- Material & labour details
- And more....

# IT-SIMPLICITY

## Reporting



### Reporting

ITS-NetProject contains a flexible report generator.

On all levels (jobs, plant-units, components) or items like contractors or suppliers a specific report can be generated..

There are already more than 80 standard reports, they can be:  
Modified, pre-viewed, printed, exported (pdf, Word, Excel, html, data)

The lay-out of all reports can be adapted to the project specific wishes

Some examples:

- “Bill of Materials” (BOM) per job(s)/area/project
- “Bill of Quantities” (BOQ) per job(s)/area/project
- “Bill of Quantities – prices” (BOQ) per job(s)/area/project

# IT-SIMPLICITY

## FTTH / FTTX Software Suite



### ITS-Software Suite™, summary:

FTTH / FTTX ITS-Software Suite™

Is a **proven software solution** to Design, Build & Maintain FTTX networks.

The ITS-Software Suite™ has designed, registered and installed **several millions** of connections.

The ITS-Software Suite™:

- **Cost optimized** automatic CAD design
- **Dedicated software** for FTTH / FTTX **Project-Management**
- Simple conversion from pre-registration to As-built **network registration**
- Offers **full process control** over your projects

# IT-SIMPLICITY

## FTTH / FTTX Software Suite



### Our FTTH / FTTX network design & engineering software solutions:

Design    Build    Operate & Maintain

#### ITS-NetDesign

Network design



#### Design of detailed FTTH-networks

► AutoCAD® based creation of all required drawings and network related quantities.

#### ITS-NetOptimus

Automatic optimization



#### Cost optimized network design

► Automatic, based on material & installation costs

#### ITS-NetProject

Project Management



#### Simplifies complex networks

► Managing of all labour, quantities & costs. Material management & process control

#### ITS-NetID

Network Registration



#### Registration & Documentation

► Creation of fibre connections / jointing reports. Integrated GIS.

# IT-SIMPLICITY

## FTTH / FTTX Software Suite



### ITS-Software Suite™, network design:

ITS-NetDesign™

**Flexible solution** for FTTH / FTTX design, based on **Autocad®**.

Automatic: costing, cabling, labelling, easy switch from P2P to GPON.

Fast output as: schematics, installer ready & as-built designs. Easy to learn.

Picture: FTTH network design Amsterdam including labelling, calculations, project management and registration



# IT-SIMPLICITY

## FTTH / FTTX Software Suite



### ITS-Software Suite™, project management:

#### ITS-NetProject™

Extensive system for: **Material, Contract and Project management.**

Lego-like structure: three project levels with 'building blocks'.

Total process control, including: purchasing, contractors, progress reports.

Completely customizable and simple to operate.

Picture: FTTH project preparation, implementation and commissioning, project info, supplier info, datasheets

The composite image illustrates the project management process and software interface. On the left, a flowchart shows the project lifecycle across three stages: PREPARATION, IMPLEMENTATION, and COMMISSIONING. In PREPARATION, 'JOB ISSUE - SCOPE - PLANNING' leads to 'SITE INSTRUCTIONS'. In IMPLEMENTATION, 'SITE INSTRUCTIONS' leads to 'ACTUALISED JOB DEFINITION', which then leads to 'RELEASE NOTE 1' and 'RELEASE NOTE 2', each followed by a 'PROGRESS REPORT'. In COMMISSIONING, 'ACTUALISED JOB DEFINITION' leads to 'AS-BUILT DATA'. On the right, a screenshot of the ITS-NetProject software interface shows a 'Project' window with a table of tasks and their status. The table includes columns for 'Task', 'Description', 'Release order', 'Status', and 'System'. Below the table, there are sections for 'Material' and 'Project' with various data points. To the right of the software interface is a product image of a black, ruggedized handheld device, likely a PDA or rugged PC used in field operations.



# IT-SIMPLICITY

## FTTH / FTTX Software Suite



### ITS-Software Suite™, network registration:

ITS-NetID™

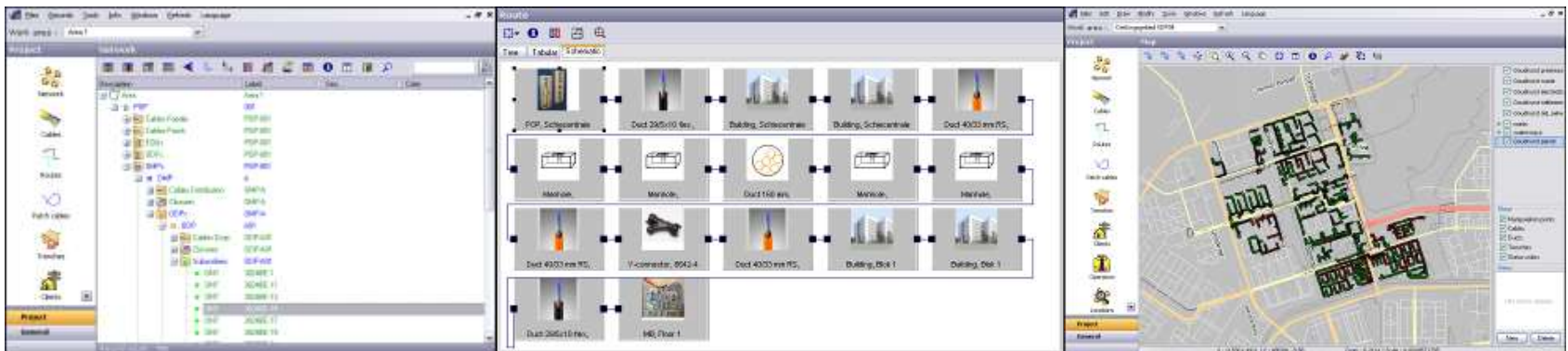
**Optical fibre network registration** with easy tree structure en integrated GIS.

All information directly available for multiple users.

All network details are direct available in multiple views and GIS.

Lego-like customizable building blocks. Easy to operate.

Picture: FTTH network documentation, registration views: tree, cable route, interactive map, GIS



# IT-SIMPLICITY

## FTTH / FTTX Software Suite



### ITS-Software Suite™, automatic cost optimized network design:

ITS-NetOptimus™

Our **automatic network design** solution.

Creates the highest quality FTTH / FTTX network-designs by using complex optimization algorithms within a user friendly graphical interface.

Cost optimized network designs are made in minutes instead of days.

Optimization parameters:

- Civil costs
- Material costs
- Installation costs

# IT-SIMPLICITY

## FTTH / FTTX Software Suite

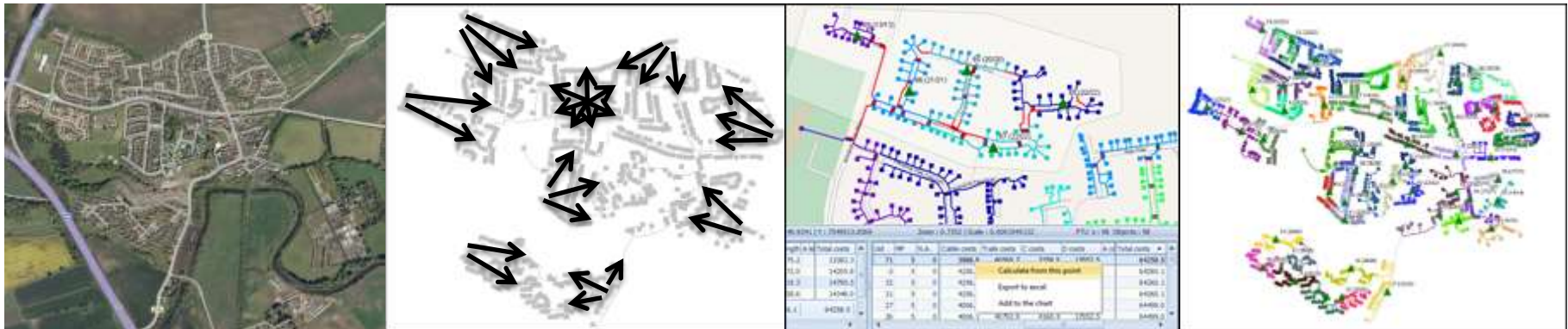


### ITS-Software Suite™, automatic cost optimized network design:

ITS-NetOptimus™ offers substantial benefits in terms of **reducing the engineering time and network building costs.**

The best network designs are listed with costs and made visible within minutes

Picture: FTTH project photo, multiple calculations, alternative designs listed, best DP area's



# IT-SIMPLICITY

## FTTH / FTTX Software Suite



### ITS-Software Suite™, automatic cost optimized network design:

Network designs and costs are directly available per area.

Multiple levels and network concepts.

#### **Substantial savings** (approx):

20 % less drop cable by improved grouping homes

2 % less distribution cable by best DP positioning

2% less trenching costs by improved routing

100 times faster than manual / alternative engineering



# IT-SIMPLICITY

---

ITSimplicity Solutions BV

info@itsimplicity.nl

M +31-646430926

T +31-348552981

Skype: itsimplicity

[www.itsimplicity.nl](http://www.itsimplicity.nl)

[www.ftthsoftware.com](http://www.ftthsoftware.com)