



# IT-SIMPLICITY

---

FTTH / FTTX Software & Solutions for:  
Fibre optic network designers,  
engineers & planners

For the creation of:  
Network concepts  
Network designs  
Network solutions  
Fibre optic / FTTH / FTTX networks

# IT-SIMPLICITY

FTTH / FTTX Networks & Solutions



## CONTENT

- ABOUT US
- PROJECT VISION
- FIBRE OPTIC / FTTH / FTTX NETWORK SOFTWARE
- WHAT WE OFFER TO:

FTTH / FTTX NETWORK DESIGNERS & ENGINEERS



IT-SIMPLICITY

FTTH / FTTX Networks & Solutions



## ABOUT US

IT-SIMPLICITY consists of a team of specialists with over 20 years of grounded experience in Telecom, Network Engineering, Project Management and Telecom Software & FTTH / FTTX network solutions.

Since we did a management buy-out in 2013-02-01 and took over all Software rights and ownerships we can now offer our software outside of DRAKA (PRYSMIAN).

Our keywords are:  
generic, flexible, scalable, strong and most important..... **SIMPLICITY!**





IT-SIMPLICITY

FTTH / FTTX Networks & Solutions



# PROJECT VISION

Our project vision and software is developed within the same project department that build Broadband Telecom projects around the world for more than 20 years.

Therefore our software solutions are:

- simple to use
- quick to learn
- totally customizable
- easy accessible
- controlling the whole project-process

# IT-SIMPLICITY

FTTH / FTTX Networks & Solutions



## SOFTWARE

FTTH / FTTX ITS-Software Suite™: network design

NetDesign™

Flexible solution for FTTH / FTTX network **design**, based on Autocad.

Automatic: costing, cabling, labelling, easy switch from P2P to GPON.

Fast output as: schematics, installer ready & as-built designs. Easy to learn.



# IT-SIMPLICITY

## FTTH / FTTX Networks & Solutions



# SOFTWARE

FTTH / FTTX ITS-Software Suite™: project management

NetProject™

Extensive system for: Material, Contract and **Project management.**

Lego-like structure: three project levels with 'building blocks'.

Total process control, including: purchasing, contractors, progress reports.

Completely customizable and simple to operate.

The composite image illustrates the software's application in project management. On the left, a flowchart depicts the project lifecycle across three stages: PREPARATION, IMPLEMENTATION, and COMMISSIONING. In the PREPARATION stage, 'JOB ISSUE - SCOPE - PLANNING' leads to 'SITE INSTRUCTIONS'. In the IMPLEMENTATION stage, 'ACTUALISED JOB DEFINITION' leads to 'RELEASE NOTE 1' and 'RELEASE NOTE 2', which both lead to 'PROGRESS REPORT'. In the COMMISSIONING stage, 'AS-BUILT DATA' is generated. On the right, a screenshot of the software interface shows a 'Project' window with a table of tasks and their completion status. The table includes columns for 'Task', 'Description', 'Release order', 'Status', and 'Remarks'. Below the table, a 'Purchase order' window is visible, showing a list of items with columns for 'Material', 'Description', 'Qty', 'Unit', 'Price', 'Total', 'Status', and 'Date'. On the far right, a photograph of a black optical fiber connector is shown.



# IT-SIMPLICITY

## FTTH / FTTX Networks & Solutions



# SOFTWARE

FTTH / FTTX ITS-Software Suite™: network registration

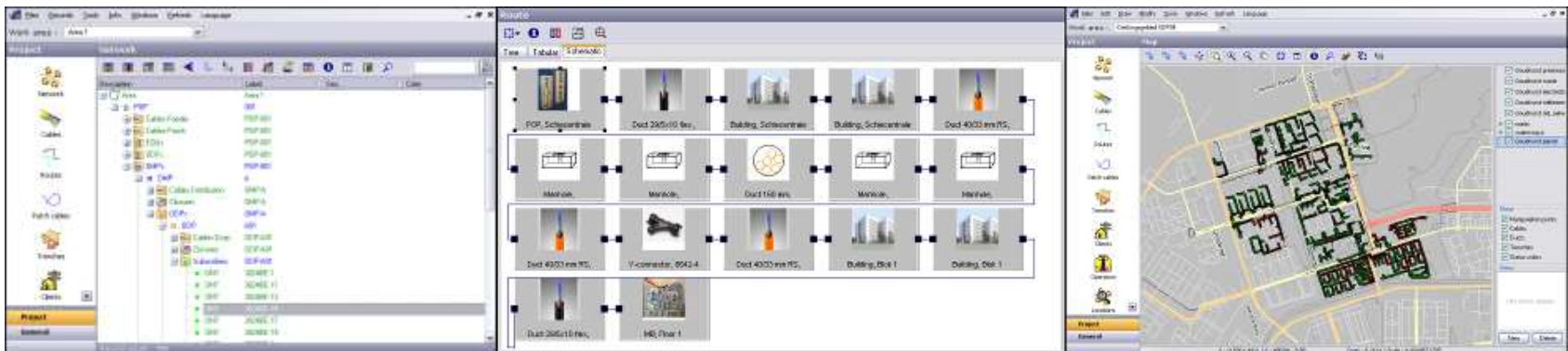
NetID™

Network **registration** with easy tree structure en integrated GIS.

All information directly available for multiple users.

All network details are direct available in multiple views and GIS.

Lego-like customizable building blocks. Easy to operate.





# IT-SIMPLICITY

FTTH / FTTX Networks & Solutions



## SOFTWARE NetOptimus™

NetOptimus™

Our automatic FTTH / FTTX network design OPTIMIZATION solution.

Creates the highest quality fibre optic / FTTH / FTTX network–designs by using complex optimization algorithms within a user friendly graphical interface.

Cost optimized network designs are made in minutes instead of days.

Optimization parameters:

- Civil costs
- Material costs
- Installation costs



# IT-SIMPLICITY

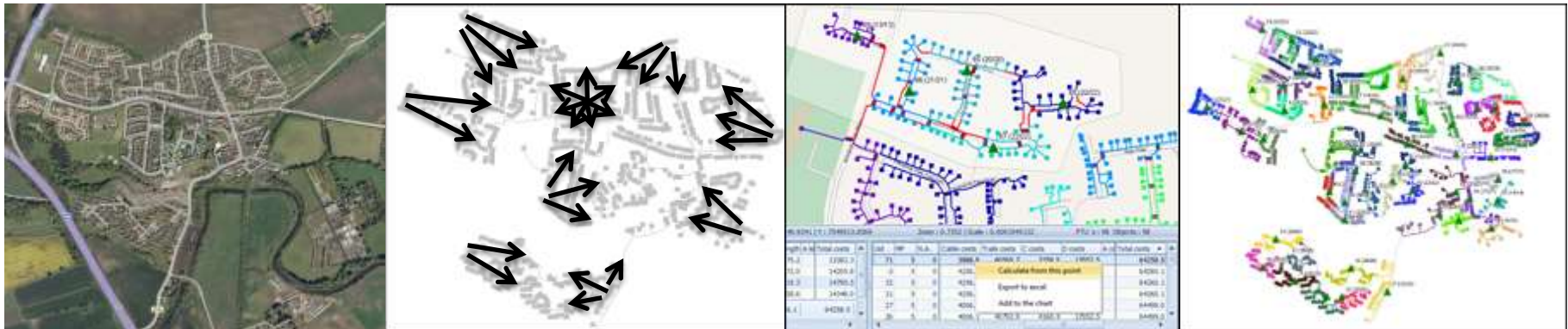
FTTH / FTTX Networks & Solutions



## SOFTWARE NetOptimus™

NetOptimus™ offers substantial benefits in terms of reducing the engineering time and fibre optic network building costs.

The best network designs are listed and made visible within minutes





# IT-SIMPLICITY

FTTH / FTTX Networks & Solutions



## SOFTWARE NetOptimus™

Network designs and costs are directly available per area.

Multiple levels and network concepts.

Savings (approx):

20 % less drop cable by improved grouping homes

2 % less distribution cable by best DP positioning

2% less trenching costs by improved routing

100 times faster than manual / alternative engineering



IT-SIMPLICITY

FTTH / FTTX Networks & Solutions



What can we offer to:  
FTTH / FTTX network engineers & designers?





# IT-SIMPLICITY

FTTH / FTTX Networks & Solutions



## We offer full support:

- With downloadable intelligent software tools
- For the fast & simple design of FTTH / FTTX networks
- Saving material & installation costs
- Creating reports with all quantities and requirements

# IT-SIMPLICITY

FTTH / FTTX Networks & Solutions



## THE ENGINEER, STEPS:

- Log in & download the software
- Install the software
- Instruction / training
- CAD: Start a new network drawing and draw possible trenches
- Log in & prepare the data on-line
- Optimize the network automatically with cables & manipulation points
- CAD: import the optimized network design

# IT-SIMPLICITY

FTTH / FTTX Networks & Solutions



## Download, Log in

HOME ▾ SOFTWARE ▾ SERVICES ▾ NEWS FREE TOOLS ▾ REFERENCES CONTACT LOGIN ▾

CUSTOMER DISTRIBUTOR FREE TOOLS DOWNLOAD

### Free Downloadable Tools

Downloadable files can be seen only by visitors logged in with a free login codes.  
Don't have your login code? [Contact Us](#) and request a free login code for downloading brochure & free tools.

Display Num  ▾

Powered by [Phoca Download](#)

You need to be logged in to see downloadable files of our free tools. Please log in below.

If you don't have your login code, [Contact Us](#), and request your FREE login code for brochure & free tools.

User Name

Password

Remember Me

- [Forgot your password?](#)
- [Forgot your username?](#)



# IT-SIMPLICITY

FTTH / FTTX Networks & Solutions



## Download, optimization software

HOME ▾ SOFTWARE ▾ SERVICES ▾ NEWS FREE TOOLS ▾ REFERENCES CONTACT LOGIN ▾

EXPERIENCE OUTPUT

### Free Downloadable Tools

Downloadable files can be seen only by visitors logged in with a free login codes.  
Don't have your login code? [Contact Us](#) and request a free login code for downloading brochure & free tools.

Hi demo,  
[Log out](#)

<a href="#">ITS NetOptimus brochure</a>	<a href="#">Download</a>
<a href="#">ITS Software Suite brochure</a>	<a href="#">Download</a>
<a href="#">ITS Software and Services presentation</a>	<a href="#">Download</a>
<input type="checkbox"/> <a href="#">NetOptimus installation</a>	<a href="#">Download</a>
<input type="checkbox"/> <a href="#">DrumFit installation</a>	<a href="#">Download</a>

File Downloads

# IT-SIMPLICITY

FTTH / FTTX Networks & Solutions



## THE ENGINEER, STEPS:

- Log in & download the software
- **Install the software**
- Instruction / training
- CAD: Start a new network drawing and draw possible trenches
- Log in & prepare the data on-line
- Optimize the network automatically with cables & manipulation points
- CAD: import the optimized network design

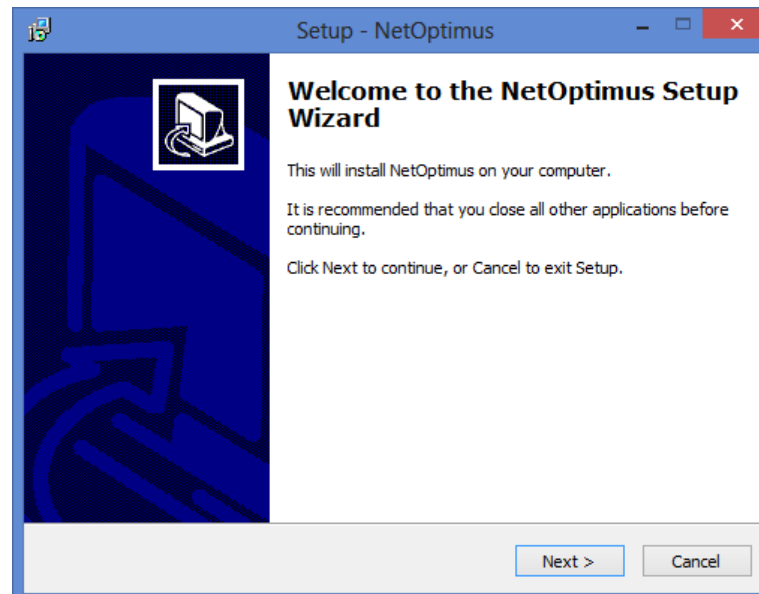
# IT-SIMPLICITY

FTTH / FTTX Networks & Solutions



## Install the software

Install the Network Optimization software with the NOPinstall.exe





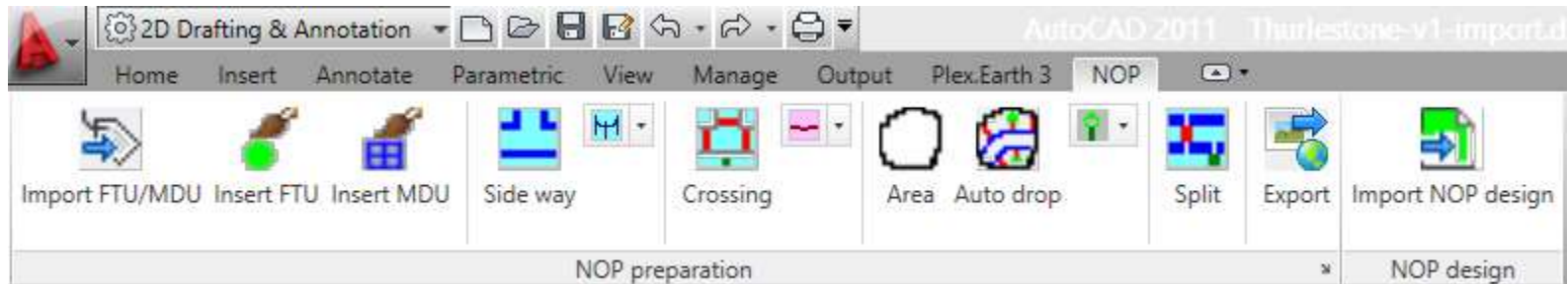
# IT-SIMPLICITY

FTTH / FTTX Networks & Solutions



## Install the software

Install the Autocad/Bricscad toolbar via simple instructions



# IT-SIMPLICITY

FTTH / FTTX Networks & Solutions



## THE ENGINEER, STEPS:

- Log in & download the software
- Install the software
- **Instruction / training**
- CAD: Start a new network drawing and draw possible trenches
- Log in & prepare the data on-line
- Optimize the network automatically with cables & manipulation points
- CAD: import the optimized network design

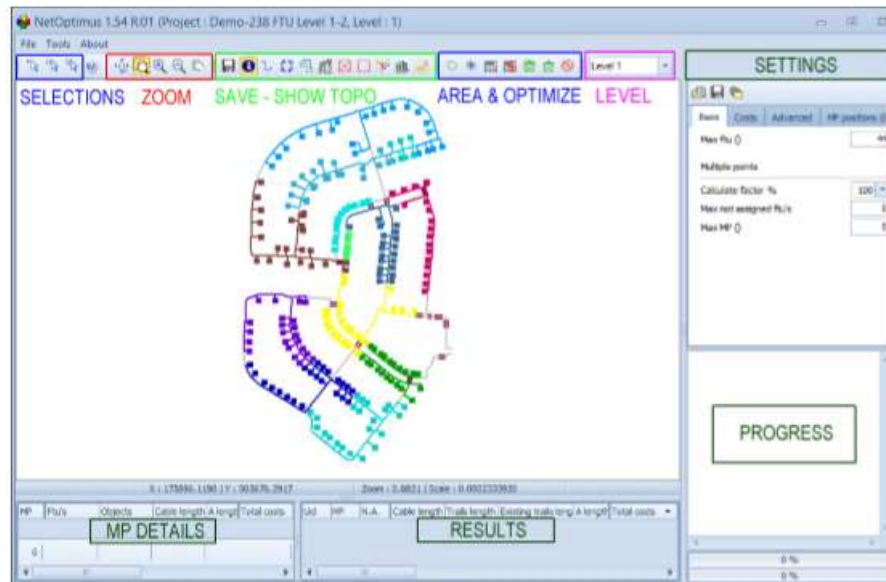
# IT-SIMPLICITY

## FTTH / FTTX Networks & Solutions



# Instruction / training

NetOptimus help.pdf (help + a simple example project, 14 pages)

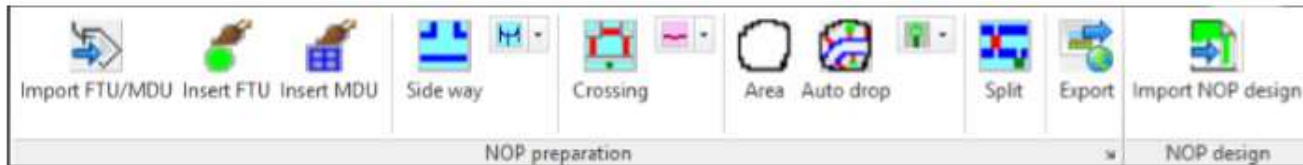






# Instruction / training

CAD menu help.pdf (installation procedure + help, 2 pages)



Menu	Description
Import FTU/MDU	<p>Starts a dialog to import your csv file with FTU/MDU locations.                      [FTU: Fibre Termination Unit / Single Dwelling Unit / Single home]                      [MDU: Multi Dwelling Unit / Apartment building]</p> <p><b>File format:</b>  <i>Header: 1=(zip)code,2=(house)number,3=(A/B/C)extension,4=room,5=ftu amount, 6=x(coordinate),7=y(coordinate)</i>                      Example of the csv file:                      code;number;extension;room;ftu;x;y                      3122TG;123;;;1;85039.01;438437.41                      3122TG;114;;;5;85037.82;438437.26</p> <p>Inserts symbols in the drawing at certain coordinates.                      The FTU symbol shows the label as combination of: number-extension-room                      The MDU symbol shows 2 rows with text: label and amount of apartments</p>

# IT-SIMPLICITY

FTTH / FTTX Networks & Solutions



## THE ENGINEER, STEPS:

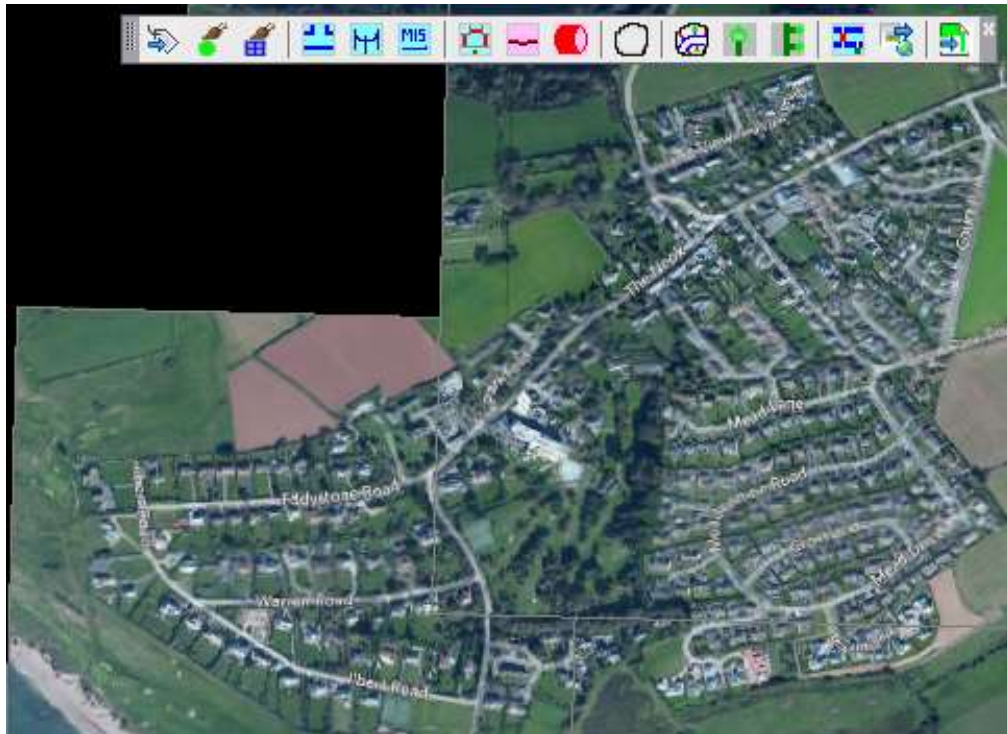
- Log in & download the software
- Install the software
- Instruction / training
- **CAD: Start a new network drawing and draw possible trenches**
- Log in & prepare the data on-line
- Optimize the network automatically with cables & manipulation points
- CAD: import the optimized network design

IT-SIMPLICITY

FTTH / FTTX Networks & Solutions



Start a new network drawing





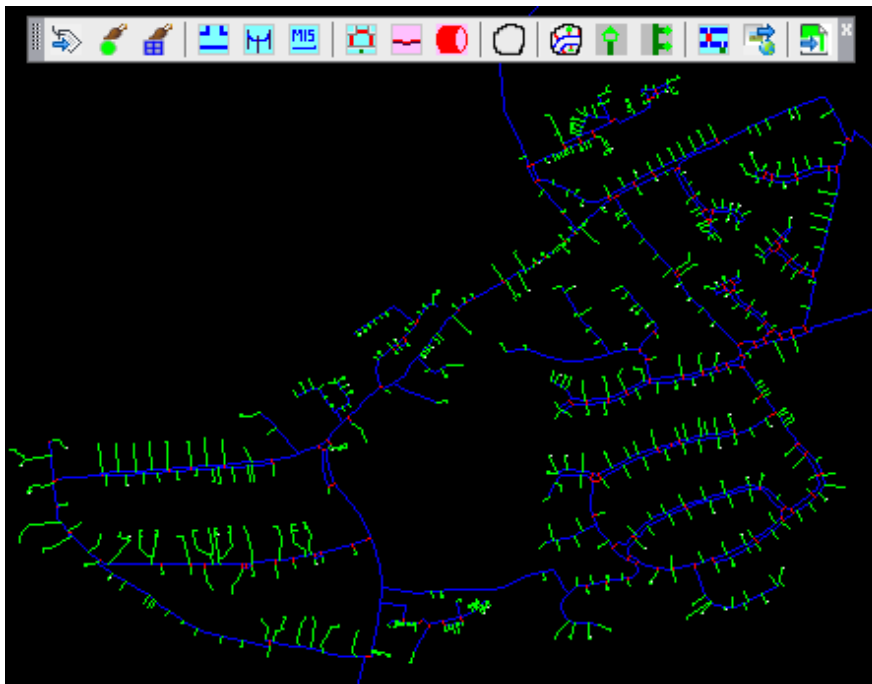
IT-SIMPLICITY

FTTH / FTTX Networks & Solutions



# Start a new network drawing

Use the toolbar to insert FTU's and possible trenches, roadcrossings etc.



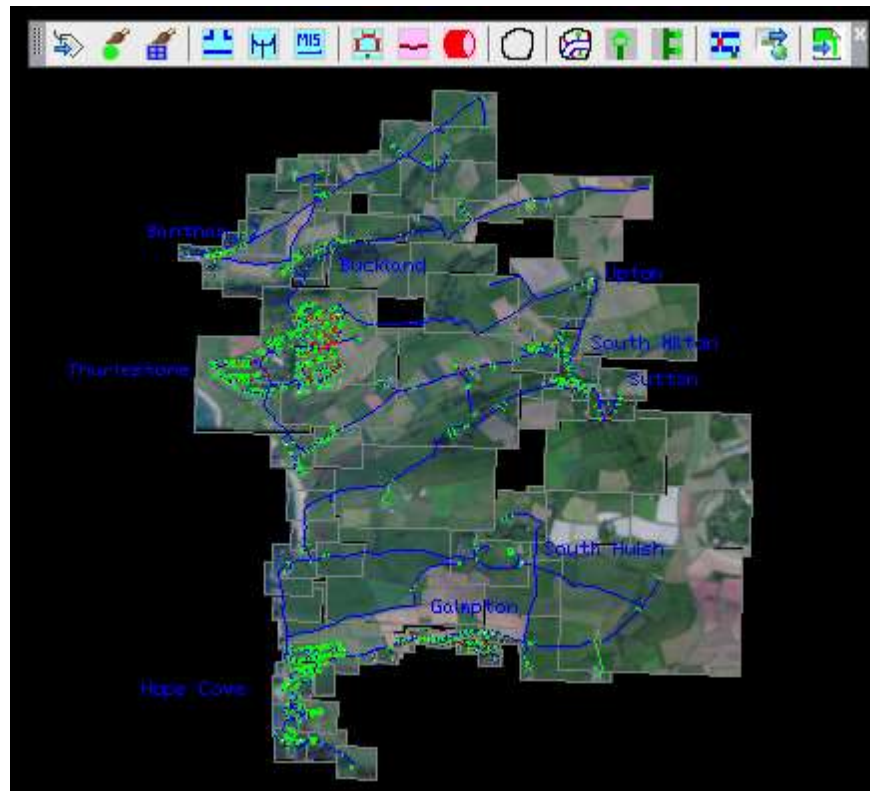


# IT-SIMPLICITY

FTTH / FTTX Networks & Solutions



## Prepare the whole area



# IT-SIMPLICITY

FTTH / FTTX Networks & Solutions



## THE ENGINEER, STEPS:

- Log in & download the software
- Install the software
- Instruction / training
- CAD: Start a new network drawing and draw possible trenches
- **Log in & prepare the data on-line**
- Optimize the network automatically with cables & manipulation points
- CAD: import the optimized network design

IT-SIMPLICITY

FTTH / FTTX Networks & Solutions



# Log in and prepare on-line

## Customer login

Log in

Email :

dick.van.den.dool@it x

Password :

••••

Login

[Forgot your password?](#)

# IT-SIMPLICITY

## FTTH / FTTX Networks & Solutions



# Upload trench data

menu	Welcome!
Welcome Upload history Payments history	<b>Welcome Dick van den Dool.</b> Company : ITsimplicity
Your profile Log out	Purchased credits : <b>54000</b> Used credits : <b>13919</b> Remaining credits : <b>40081</b>
	<b>Upload the NetDesign data file (*.nif) from the NetDesignData folder.</b>
	Project name : <input type="text"/>
	<input type="button" value="Bladeren..."/>
	<input type="button" value="Upload"/>



# IT-SIMPLICITY

## FTTH / FTTX Networks & Solutions



# Upload info

menu	Welcome!
Welcome Upload history Payments history	Welcome Dick van den Doel. Company : ITSimplicity
Your profile Log out	Purchased credits : <b>54000</b> Used credits : <b>13919</b> Remaining credits : <b>40081</b>
<b>Upload the NetDesign data file (*.nif) from the NetDesignData folder.</b>	
Project name : <input type="text"/>	
<input type="button" value="Bladeren..."/>	
<input type="button" value="Upload"/>	

menu	Payments history (3)															
Welcome Upload history Payments history	<table border="1"><thead><tr><th>Id</th><th>Payment date</th><th>Invoice number</th><th>Amount</th><th>Credits</th></tr></thead><tbody><tr><td>3</td><td>11/01/2013</td><td>0018119</td><td>5000</td><td>3000</td></tr><tr><td>2</td><td>10/01/2013</td><td>0018118</td><td>2000</td><td>1000</td></tr></tbody></table>	Id	Payment date	Invoice number	Amount	Credits	3	11/01/2013	0018119	5000	3000	2	10/01/2013	0018118	2000	1000
Id	Payment date	Invoice number	Amount	Credits												
3	11/01/2013	0018119	5000	3000												
2	10/01/2013	0018118	2000	1000												
Your profile Log out	<u>Comment</u> The types of advertisements displayed are based on a number of factors such as this site's content and your Internet browsing and search history. See the Privacy Policy for more information.															
<table border="1"><tbody><tr><td>1</td><td>07/02/2013</td><td>0018117</td><td>1000</td><td>50000</td></tr></tbody></table>		1	07/02/2013	0018117	1000	50000										
1	07/02/2013	0018117	1000	50000												

menu
Welcome Upload history Payments history
Your profile Log out

Upload history (163)						
Id	Import date	Project	Imported by	Total FTU' s	Total new FTU' s	Download
163	18/03/2014		Dick van den Doel	150	0	Download
162	14/03/2014		Dick van den Doel	17	0	Download
161	15/02/2014		Dick van den Doel	1382	0	Download
160	15/02/2014		Dick van den Doel	1382	2	Download
159	14/02/2014		Dick van den Doel	1382	0	Download
158	14/02/2014		Dick van den Doel	1382	0	Download
157	13/02/2014		Dick van den Doel	1382	0	Download
156	13/02/2014		Dick van den Doel	110	0	Download
155	13/02/2014		Dick van den Doel	1382	0	Download
154	13/02/2014		Dick van den Doel	1382	0	Download
153	13/02/2014		Dick van den Doel	319	0	Download
152	07/02/2014		Dick van den Doel	494	0	Download
151	07/02/2014		Dick van den Doel	494	0	Download
150	06/02/2014		Dick van den Doel	150	0	Download
149	06/02/2014		Dick van den Doel	150	0	Download

# IT-SIMPLICITY

FTTH / FTTX Networks & Solutions



## THE ENGINEER, STEPS:

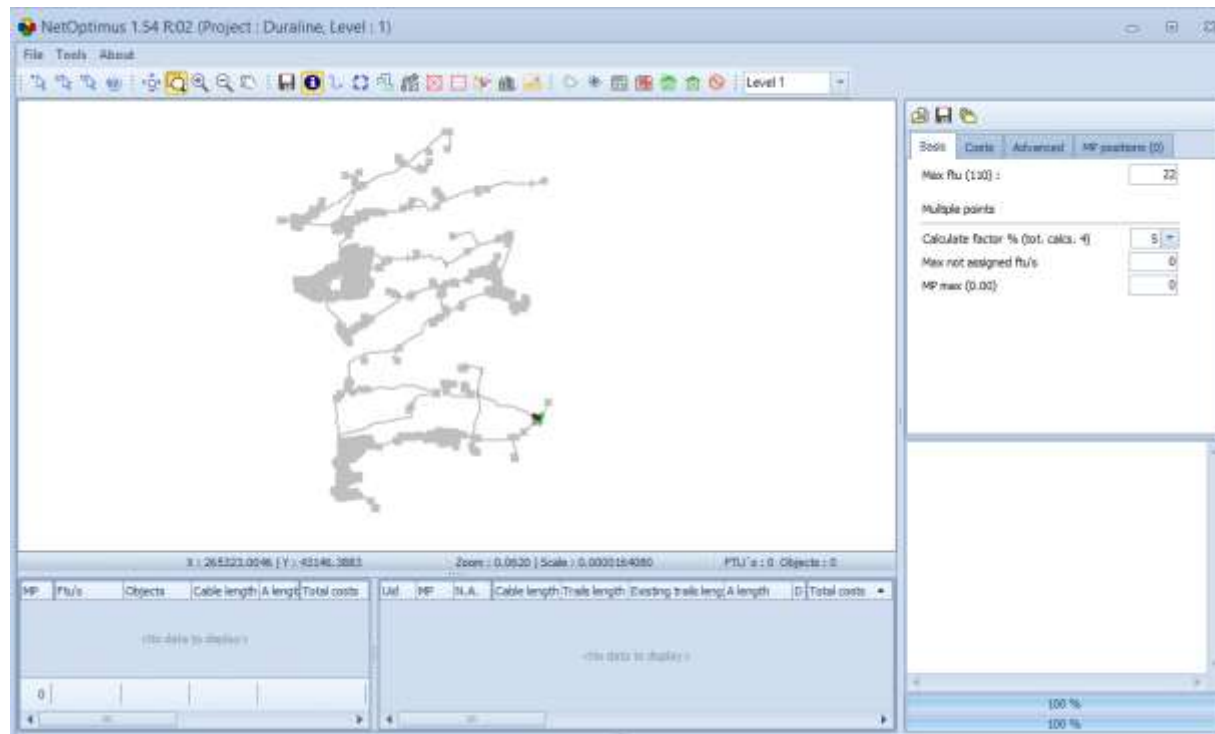
- Log in & download the software
- Install the software
- Instruction / training
- CAD: Start a new network drawing and draw possible trenches
- Log in & prepare the data on-line
- **Optimize the network automatically with cables & manipulation points**
- CAD: import the optimized network design

# IT-SIMPLICITY

FTTH / FTTX Networks & Solutions



## Automatic optimization



# IT-SIMPLICITY

## FTTH / FTTX Networks & Solutions



# Automatic optimization

The screenshot displays the NetOptimus 1.54 R.02 software interface. The main window shows a network map with various nodes and connections. The nodes are labeled with IDs and their respective FTU (Fiber Terminal Unit) counts, such as 60 (22/22), 61 (22/22), 62 (22/22), 63 (22/22), 64 (22/22), 65 (22/22), 66 (22/22), 67 (22/22), 68 (22/22), 69 (22/22), 70 (22/22), 71 (22/22), 72 (22/22), 73 (22/22), 74 (22/22), 75 (22/22), 76 (22/22), 77 (18/18), 78 (22/22), 79 (22/22), 80 (22/22), 81 (6/6), 82 (5/6), 83 (21/21), 84 (19/19), 85 (21/21), 86 (18/18), 87 (22/22), 88 (22/22), 89 (22/22), 90 (22/22), 91 (22/22), 92 (5/6), 93 (19/19), 94 (22/22), 95 (22/22), 96 (22/22), 97 (22/22), 98 (22/22), 99 (22/22), 100 (22/22), 101 (22/22), 102 (22/22), 103 (22/22), 104 (22/22), 105 (22/22), 106 (22/22), 107 (22/22), 108 (22/22), 109 (22/22), 110 (22/22), 111 (22/22), 112 (22/22), 113 (22/22), 114 (22/22), 115 (22/22), 116 (22/22), 117 (22/22), 118 (22/22), 119 (22/22), 120 (22/22), 121 (22/22), 122 (5/6).

The interface includes a menu bar (File, Tools, About), a toolbar, and a status bar. The status bar shows coordinates (X: 267413.8226 | Y: 43059.0548), zoom level (0.3619), scale (0.0000957532), and object counts (FTU's: 1382, Objects: 1382).

The bottom-left panel displays a table with columns: MP, FtU/s, Objects, Cable length (A length), Total costs, Uid, MP, N.A., Cable length, Trails length, Existing trails leng, A length, D, Total costs.

MP	FtU/s	Objects	Cable length (A length)	Total costs	Uid	MP	N.A.	Cable length	Trails length	Existing trails leng	A length	D	Total costs
62	22	22	1596.7	12836.4									
72	22	22	2094.8	15586.4									
60	22	22	2145.0	18352.6									
77	1382.00	1382.00	148177.7	1302996.3									

The bottom-right panel shows progress information and calculation results:

- Progress: 74/77, 75/77, 76/77, 77/77
- Cable length: 148177.7
- Cable cost: 44453.3
- Trails length: A=0.0, C=1477.6, D=36952.0, M=0.0, S=
- Trails cost: A=0.0, C=70405.8, D=303102.1, M=0.0, S=
- Total trails length: 54180.0, existing 0.0
- Total trails Cost: 1012726.2
- MP cost: 46200.0
- FTU cost: 0.0
- Total cost: 1103379.5
- Time: 30.2
- Calculations: 2012491



# IT-SIMPLICITY

## FTTH / FTTX Networks & Solutions



# Cable, trench, manipulation costs

The screenshot displays the NetOptimus 1.54 R02 software interface. The main window shows a network diagram with various nodes and connections. The nodes are labeled with IDs and coordinates, such as 145 (1016), 144 (1515), 135 (1181), 130 (2202), 123 (1107), 118 (3020), 116 (152202), 115 (88), 112 (1100), 111 (1011), 109 (2022), 108 (2022), 107 (2022), 106 (2022), 105 (2022), 104 (2022), 103 (2022), 102 (2022), 101 (2022), 100 (2022), 99 (2022), 98 (2022), 97 (2022), 96 (2022), 95 (2022), 94 (2022), 93 (2022), 92 (2022), 91 (2022), 90 (2022), 89 (2022), 88 (2022), 87 (2022), 86 (2022), 85 (2022), 84 (2022), 83 (2022), 82 (2022), 81 (2022), 80 (2022), 79 (2022), 78 (2022), 77 (2022), 76 (2022), 75 (2022), 74 (2022), 73 (2022), 72 (2022), 71 (2022), 70 (2022), 69 (2022), 68 (2022), 67 (2022), 66 (2022), 65 (2022), 64 (2022), 63 (2022), 62 (2022), 61 (2022), 60 (2022), 59 (2022), 58 (2022), 57 (2022), 56 (2022), 55 (2022), 54 (2022), 53 (2022), 52 (2022), 51 (2022), 50 (2022), 49 (2022), 48 (2022), 47 (2022), 46 (2022), 45 (2022), 44 (2022), 43 (2022), 42 (2022), 41 (2022), 40 (2022), 39 (2022), 38 (2022), 37 (2022), 36 (2022), 35 (2022), 34 (2022), 33 (2022), 32 (2022), 31 (2022), 30 (2022), 29 (2022), 28 (2022), 27 (2022), 26 (2022), 25 (2022), 24 (2022), 23 (2022), 22 (2022), 21 (2022), 20 (2022), 19 (2022), 18 (2022), 17 (2022), 16 (2022), 15 (2022), 14 (2022), 13 (2022), 12 (2022), 11 (2022), 10 (2022), 9 (2022), 8 (2022), 7 (2022), 6 (2022), 5 (2022), 4 (2022), 3 (2022), 2 (2022), 1 (2022).

The software interface includes a menu bar (File, Tools, About), a toolbar, and a status bar. The status bar shows coordinates (X: 269875.2758, Y: 41880.6051), zoom (0.0543), scale (0.000143798), FTU's (1382), and Objects (1382).

The bottom-left corner features a table with the following data:

MP	Ft/s	Objects	Cable length A	Total costs
62	22	22	1998.7	12816.4
73	22	22	2094.8	13586.4
80	22	22	2145.0	15352.6
77	1382.00	1382.00	148177.7	1102996.3

The bottom-right corner displays a progress and cost summary:

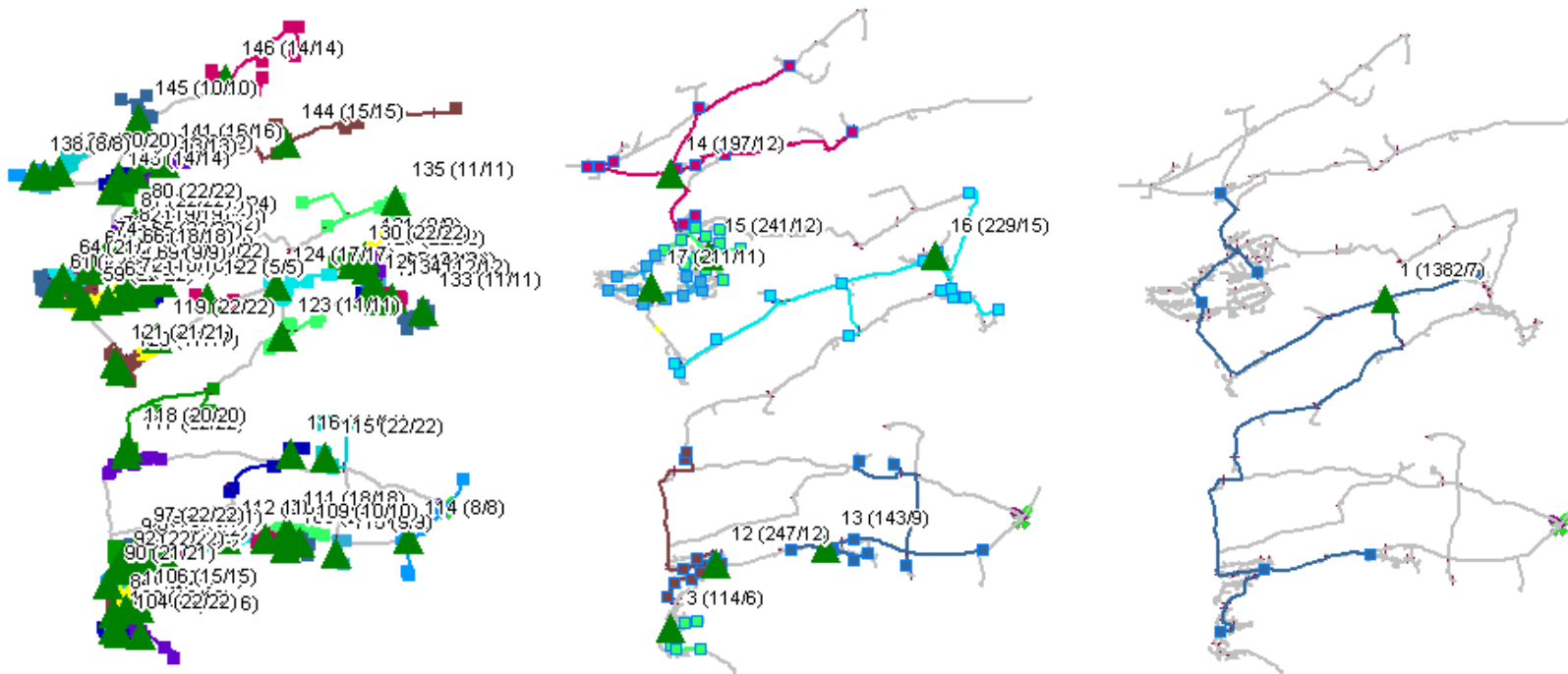
Progress: 74/77  
Progress: 75/77  
Progress: 76/77  
Progress: 77/77  
Cable length: 148177.7  
Cable cost: 44453.3  
Trails length: A=0.0, C=1477.6, D=56952.0, M=0.0, S=0.0  
Trails cost: A=0.0, C=70405.8, D=303102.1, M=0.0, S=0.0  
Total trail length: 54130.0, existing 0.0  
Total trail cost: 1012726.2  
MP cost: 46200.0  
FTU cost: 0.0  
Total cost: 1103376.5  
Time: 30.2  
Calculations: 2022-06-1

# IT-SIMPLICITY

FTTH / FTTX Networks & Solutions



## Multiple levels, cost optimized

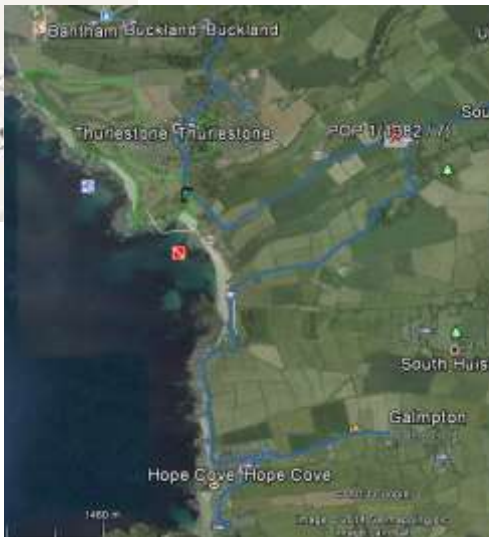


IT-SIMPLICITY

FTTH / FTTX Networks & Solutions



# On-line maps & Google Earth





# IT-SIMPLICITY

FTTH / FTTX Networks & Solutions



## THE ENGINEER, STEPS:

- Log in & download the software
- Install the software
- Instruction / training
- CAD: Start a new network drawing and draw possible trenches
- Log in & prepare the data on-line
- Optimize the network automatically with cables & manipulation points
- **CAD: import the optimized network design**

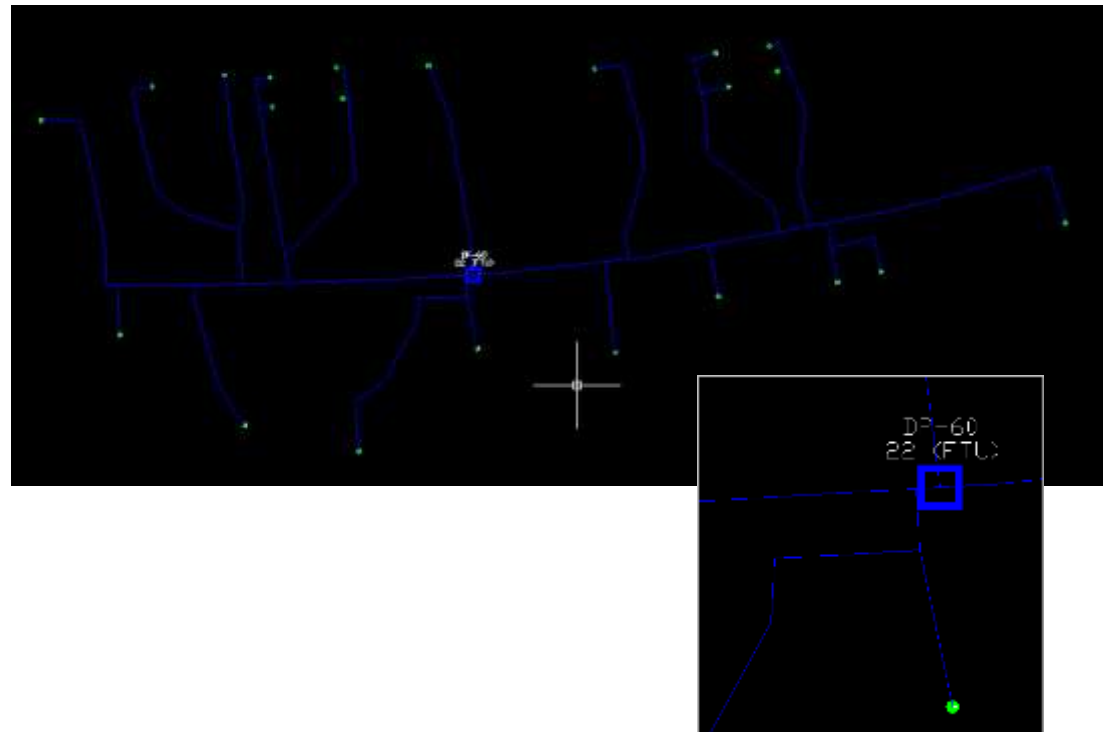
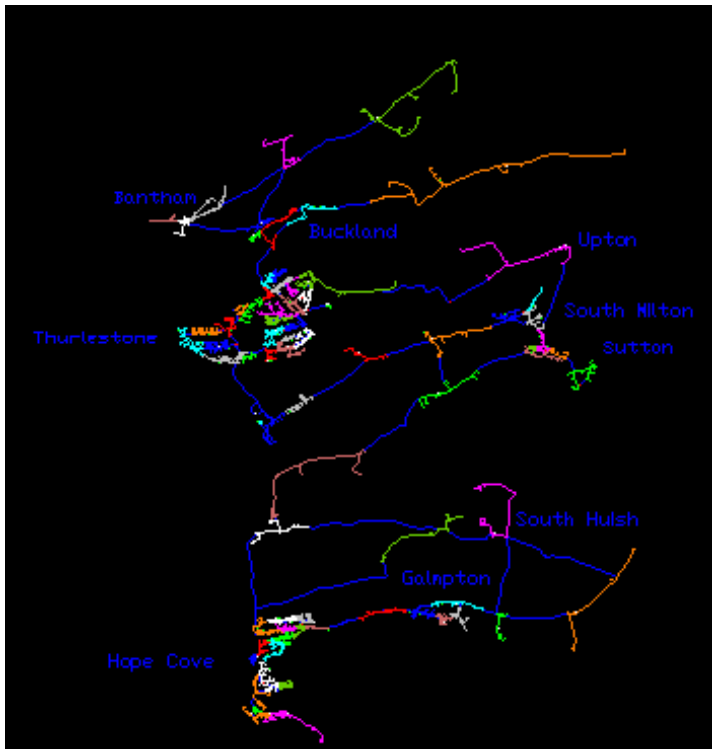


# IT-SIMPLICITY

FTTH / FTTX Networks & Solutions



## CAD: import optimized design





# IT-SIMPLICITY

---

ITSimplicity Solutions BV  
info@itsimplicity.nl  
M +31-646430926  
T +31-348552981  
Skype: itsimplicity  
www.itsimplicity.nl